

KOHLER®

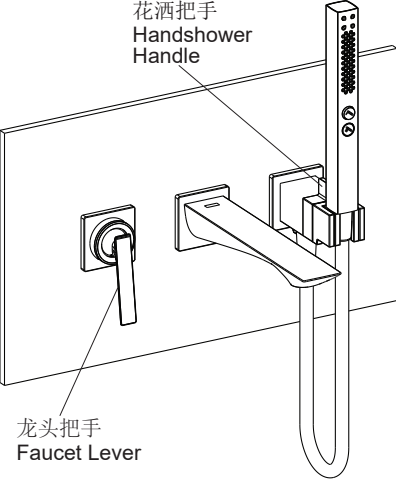
INSTALLATION INSTRUCTIONS

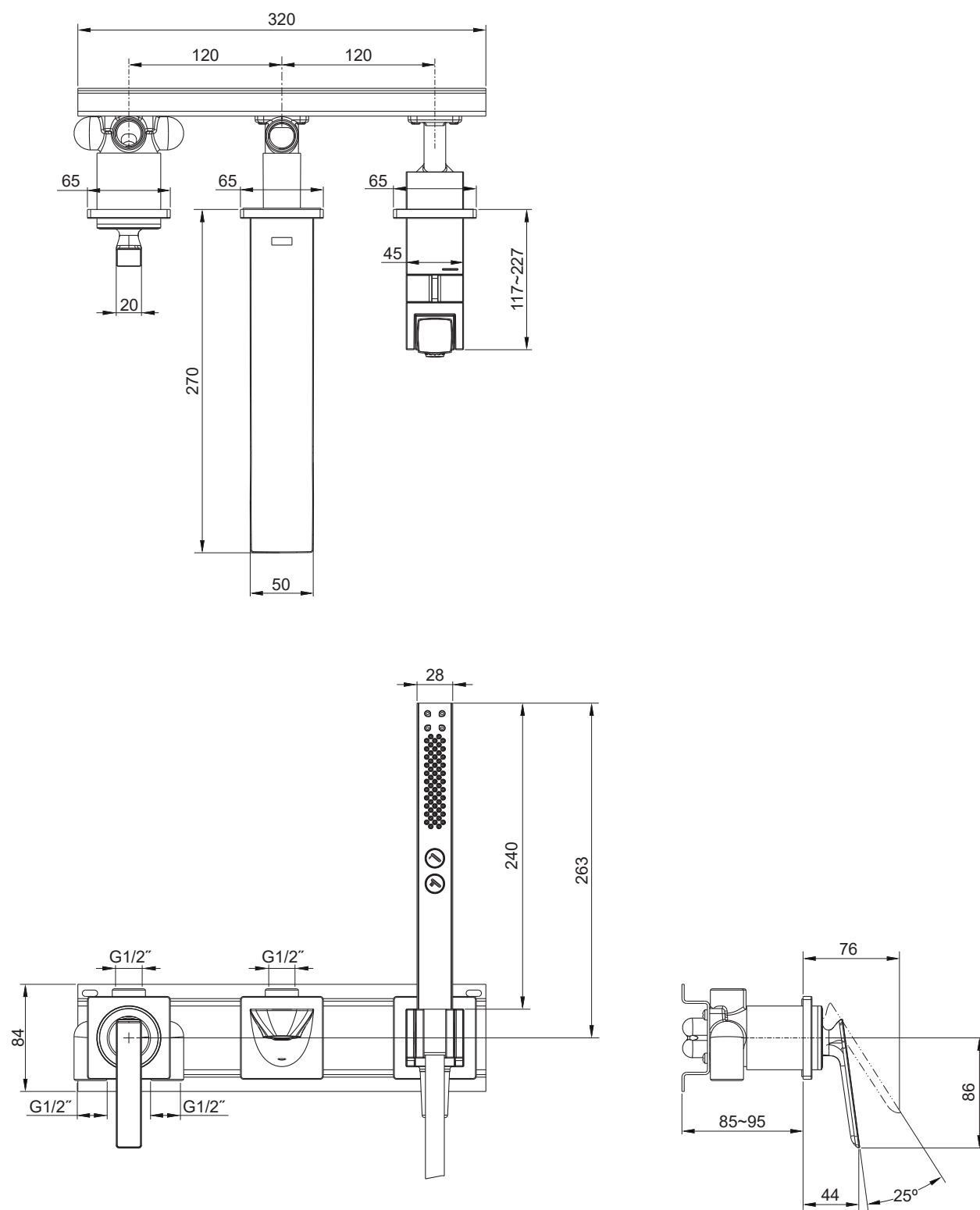
安装说明书

奕界

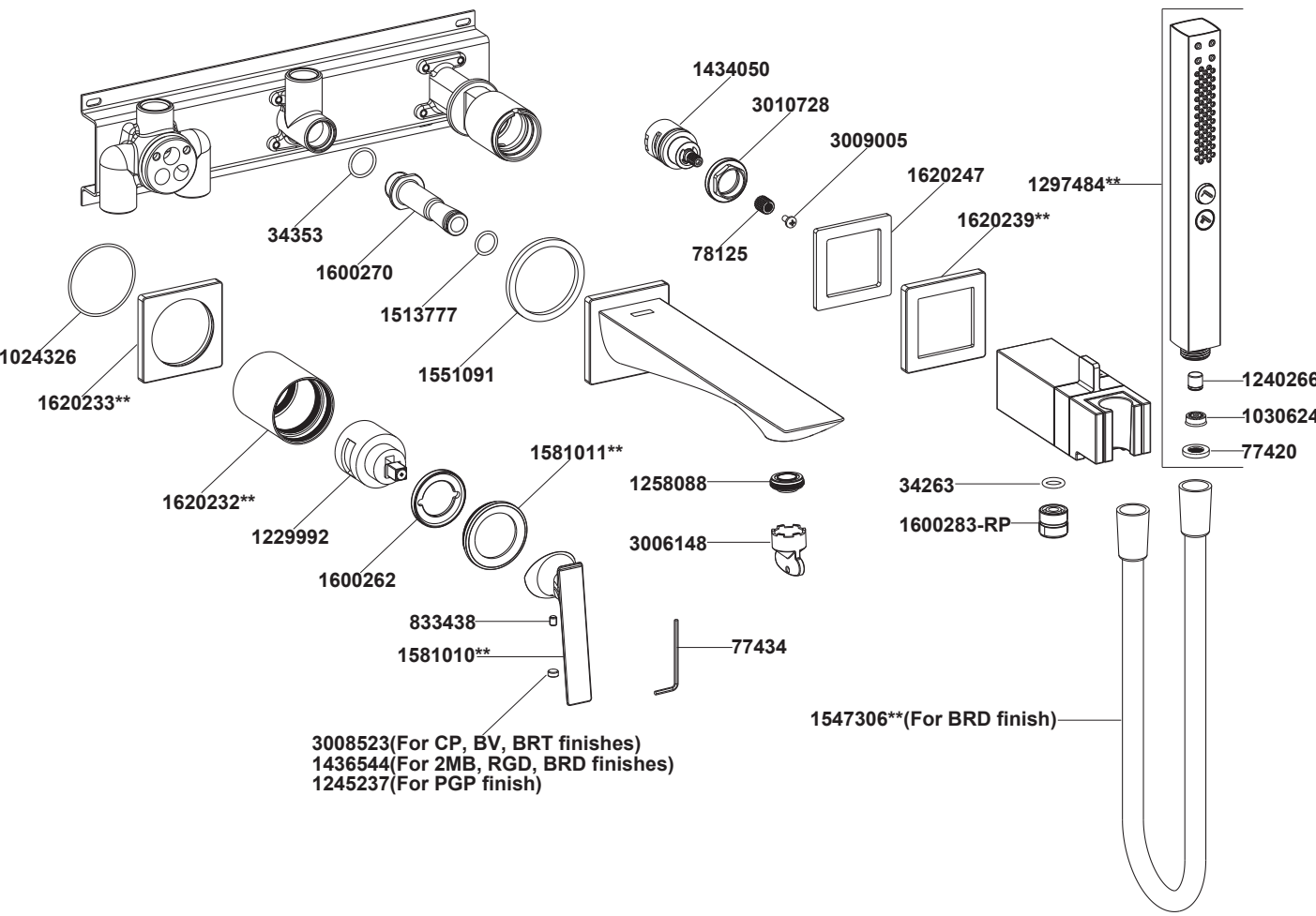
MODERN LIFE EDGE

3 Holes Wall-Mount Bath Faucet with Handshower

EX38221T-4 3孔墙出水浴缸花洒龙头	
安装之前	BEFORE YOU BEGIN
<p>所有的资料是按最新出版的产品资料编写而成。科勒公司保留任何时候不经通知即可改变产品特性、包装或产品可供类型的权利。</p> <p>说明书包括重要的安装、保养及清洁方面的内容，请把这些资料交给用户阅读。</p> <p>注意事项：</p> <p>1. 一定要先彻底冲洗供水管以清除管道中的杂质。</p> <p>2. 检查供水管有无损坏。如需要，进行替换。</p> <p>3. 遵守当地管路安装条例。</p> <p>4. 预埋前测试安装连接部位是否有渗漏，根据需要修理之。</p> <p>5. 花洒最高工作压力为：0.5MPa(5bar)。水压超过0.5MPa(5bar)时须安装减压阀。花洒最高工作温度及环境温度：60°C。请特别注意花洒同花洒连接的臂管须远离浴霸，否则可能损坏花洒及其密封件，甚至对使用者造成伤害。</p> <p>6. 淋浴器加施的水效标识表明本产品的水效等级等性能符合GB28378-2019《淋浴器水效限定值及水效等级》的要求，是产品符合性的一种标识。</p>	<p>All information is based on the latest product information available at the time of publication. Kohler Co. reserves the right to make changes in product characteristics, packaging, or availability at any time without notice.</p> <p>Please leave these instructions for the consumer. They contain important information.</p> <p>NOTES:</p> <p>1. Flush the water supply pipes thoroughly to remove debris.</p> <p>2. Inspect the supply tubing for damage. Replace as necessary.</p> <p>3. Observe local plumbing codes.</p> <p>4. Check for leaks before covering the pipes, repairs as needed.</p> <p>5. The highest working pressure for handshower is 0.5MPa(5bar). If it exceeds 0.5MPa(5bar), a pressure reducer is needed. The highest water and environment temperature is 60°C. Please keep handshower away from heater, or it may become damaged and cause injury to the user.</p> <p>6. The water efficiency label applied to the shower indicates that the water efficiency grade and other performance of the product meet the requirements of GB 28378-2019 "Minimum Allowable Values of Water Efficiency and Water Efficiency Grades for Showers" which is a marking of product conformity.</p>
使用说明	OPERATION INSTRUCTION
<p>将龙头把手轻轻提起，浴缸出水口出水，顺时针旋转为热水，逆时针旋转为冷水。</p> <p>顺时针旋转花洒把手，旋转至90度时花洒出冷水，旋转至180度时花洒出热水。</p> <p>按动花洒面板上的按键即可切换花洒的各种功能。</p>	<div><div><div>花洒把手 Handshower Handle</div><div>龙头把手 Faucet Lever</div></div></div> <p>Lift the faucet lever gently for bath spout. Turn clockwise for hot water, turn counter-clockwise for cold water.</p> <p>Rotate the handshower handle clockwise to 90° for cold water, rotate to 180° for hot water.</p> <p>Press the buttons of the handshower to change the water flow.</p>

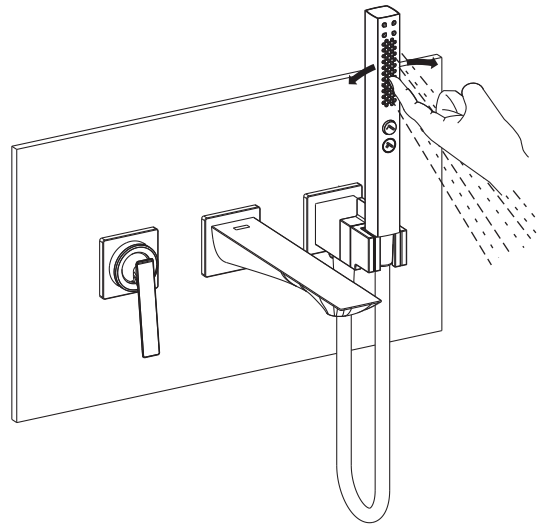


EX38221T-4 3孔墙出水浴缸花洒龙头



**订购时请说明颜色编号

**Color code must be specified when ordering



如何维护保养手持花洒

喷孔杂质或结垢会导致水流变形，流量变小。打开水源，用力按压或摩擦橡胶喷孔，去除杂质或水垢。

How to Maintain the Handshower

Any debris or mineral build-up may cause the flow stream distorted or reduce the flow rate. To remove the debris or mineral build-up, run water through the handshower, firmly press or rub your finger back and forth across the rubber nozzles.

清洗说明

适用于所有加工处理过的表面：以中性肥皂水清洗镀层表面，再以干净的软布彻底擦干整个表面，许多清洁剂，比如氨水、去污粉及洁厕灵等，会对电镀表面造成伤害，切忌使用。

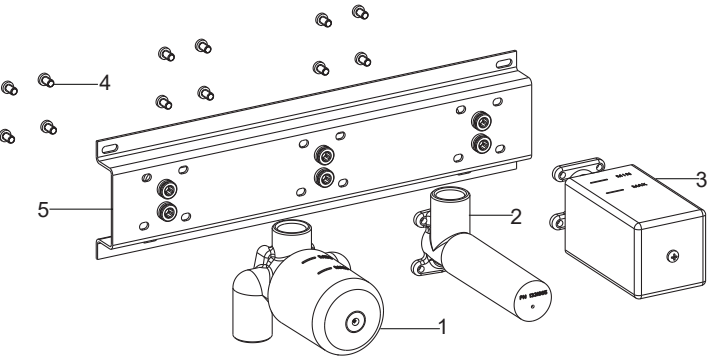
有磨损性的清洁用具或清洁剂也不可使用于科勒牌的水龙头及其配件上。

CLEANING INSTRUCTIONS

All Finishes: Clean the finish with mild soap and warm water. Wipe entire surface completely dry with clean soft cloth. Many cleaners may contain chemicals, such as ammonia, chlorine, toilet cleaner etc. which could adversely affect the finish and are not recommended for cleaning.

Do not use abrasive cleaners or solvents on Kohler faucets and fittings.

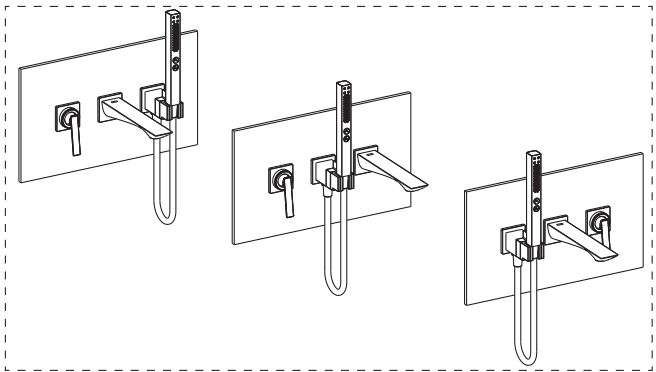
安装步骤



如何安装埋墙本体组件

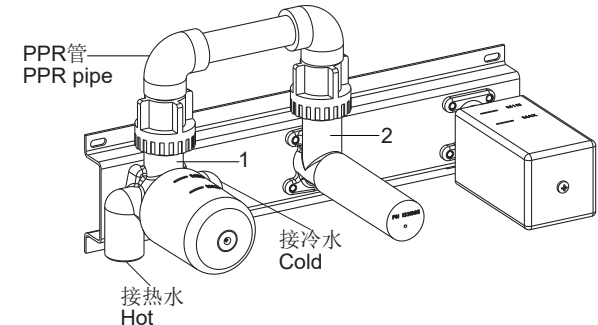
将阀芯本体组件(1)、出水口本体组件(2)、花洒托架本体组件(3)通过螺钉(4)安装在基板(5)上。这三个部分的安装位置可根据用户需求确定以实现不同的安装效果，举例如右图。**注意：**请仔细确定这三个部分的安装位置，墙壁安装好后无法再调换位置。

INSTALLATION



How to Install the Body Kit

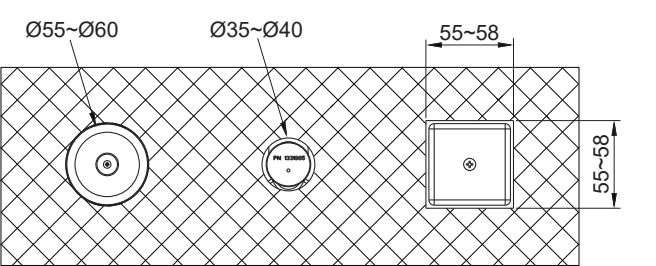
Install the valve body kit(1), spout body kit(2) and bracket body kit(3) onto the faceplate(5) with the screws(4). The installation positions of these three parts can be determined according to user needs to achieve different installation effects as shown in the figure on the right. **NOTE:** Please carefully determine the installation positions of these three parts, as they cannot be changed after the wall is installed.



将本体组件(1)的出水口和本体组件(2)的进水口用PPR管(客户自备)连接起来。

将安装好的本体组件固定在墙内管道上，装修好的墙面孔尺寸如图所示。

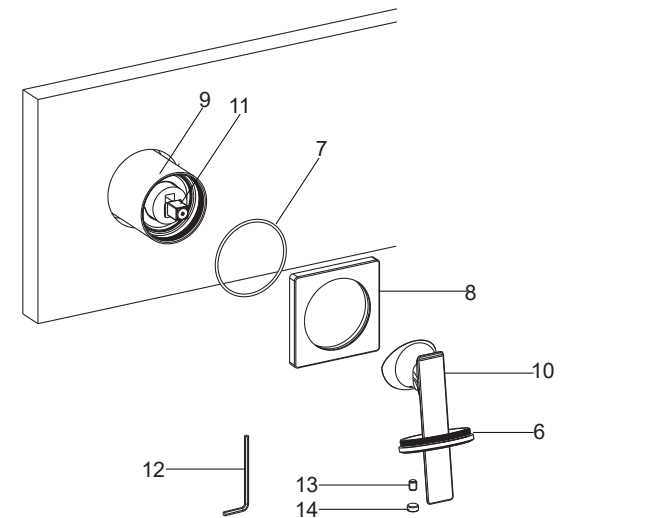
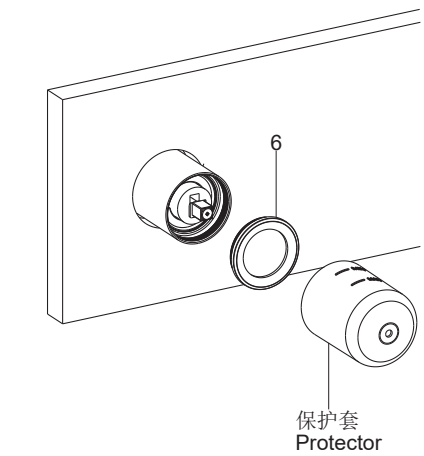
阀芯本体组件(1)下方左边接热水，右边接冷水。



Connect the outlet of the body kit(1) and inlet of the body kit(2) with PPR pipe(not provided).

Fix the installed body parts onto the wall pipes, and the diemnsions of the finished wall holes are shown in the figure.

Connect the hot/cold water supply on the left/right of the valve body kit(1).



如何安装把手

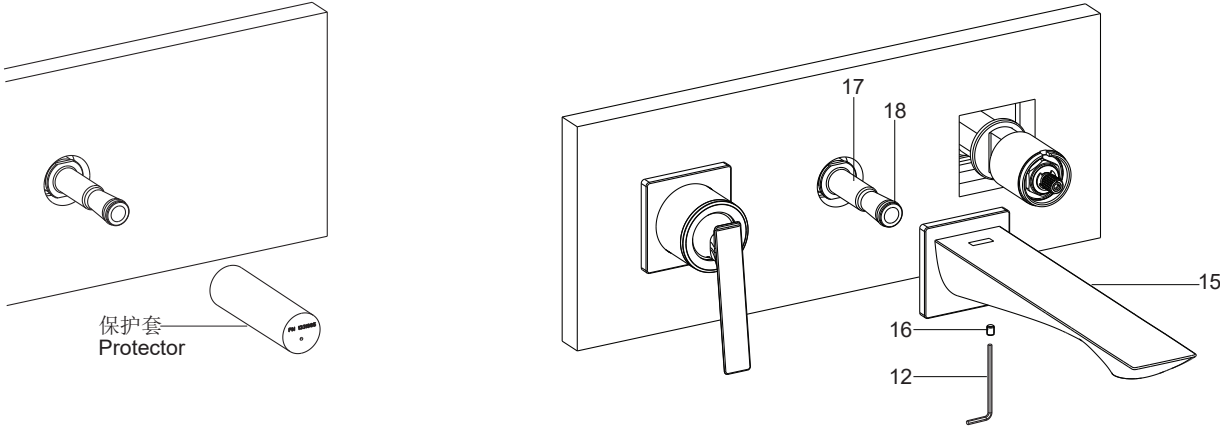
墙壁装修好后，将阀芯本体组件的保护套扔掉。同时取出圆环(6)备用。

确保O型圈(7)在装饰罩(8)底部凹槽中。将装饰罩安装到套筒(9)上直至与墙面接触。将把手(10)手柄朝下安装到阀芯(11)上。用2.5mm六角扳手(12)锁紧螺钉(13)以固定把手，塞入塞扣(14)。将圆环(6)穿过把手旋紧到套筒(9)上。

How to Install the Handle

Remove the valve body protector after completing the finished wall. Uninstall the ring(6) for next installing.

Make sure the O-ring(7) is put into the groove of the escutcheon(8). Install the escutcheon onto the sleeve(9) until it is against with the finished wall. Install the handle(10) onto the valve(11). Tighten the screw(13) with hex wrench(12) to secure the handle. Insert the plug(14). Slide the ring(6) through the handle and tighten it onto the sleeve(9).



如何安装出水口

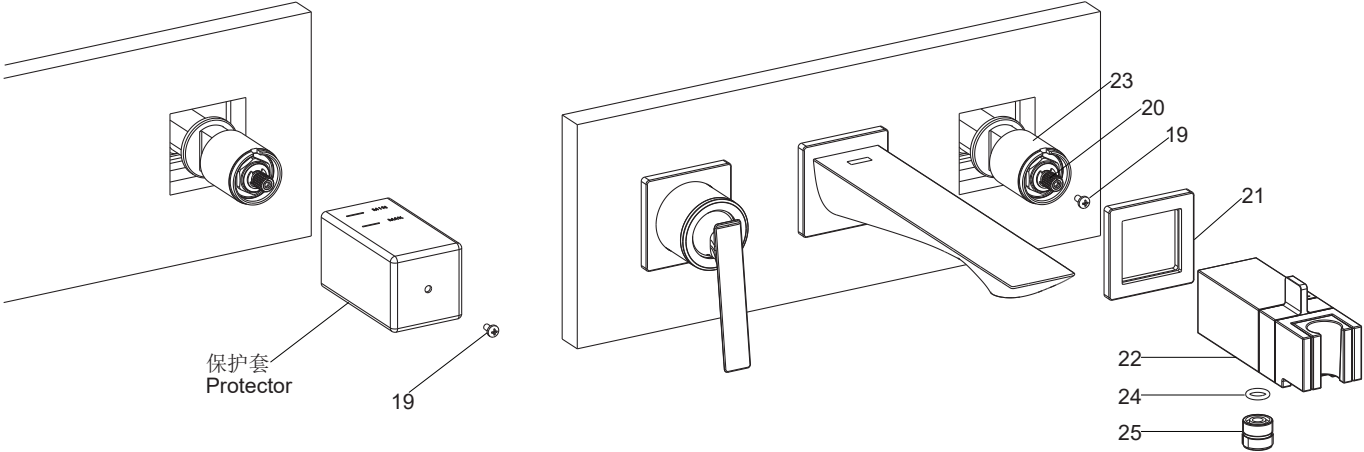
将出水口本体组件的保护套扔掉。

用2.5mm六角扳手(12)旋松出水口(15)的底部螺钉(16)。将出水口出口朝下安装到接头(17)上，使其紧贴墙面。用六角扳手锁紧螺钉到出水口底部，固定出水口。**注意：**不要划伤接头上的O型圈(18)。

How to Install the Spout

Remove the spout body protector.

Loosen the screw(16) in the spout(15) bottom with 2.5mm hex wrench(12). Install the spout onto the connector(17) with its outlet downwards until it is against the finished wall. Tighten the screw with hex wrench to secure the spout. **NOTE:** Don't damage the O-ring(18) on the connector.



如何安装花洒托架

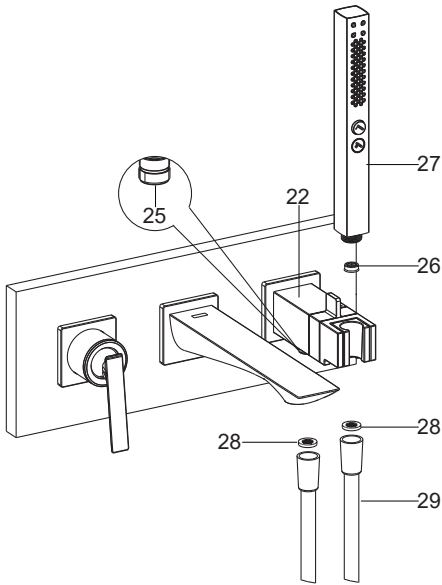
将花洒托架本体组件的保护套扔掉。请将保护套上的固定螺钉(19)保留。

将螺钉(19)拧紧到阀芯齿套(20)上。将装饰罩(21)安套在花洒托架(22)上。将花洒托架安装在套筒(23)上，接着将O型圈(24)放在固定接头(25)上，然后用扳手锁紧接头。

How to Install the Shower Bracket

Remove the bracket body protector. Please keep the screw(19).

Tighten the screw(19) into the adaptor(20). Slide the escutcheon(21) onto the bracket(22). Install the bracket onto the sleeve(23). Put the O-ring(24) into the connector(25), tighten it with wrench.



如何安装手持花洒

根据需要，将限流器(26)装入手持花洒(27)进水口。将垫片(28)装进软管(29)，用软管连接接头(25)和手持花洒。锁紧衔接螺母。

将手持花洒挂在托架(22)上。

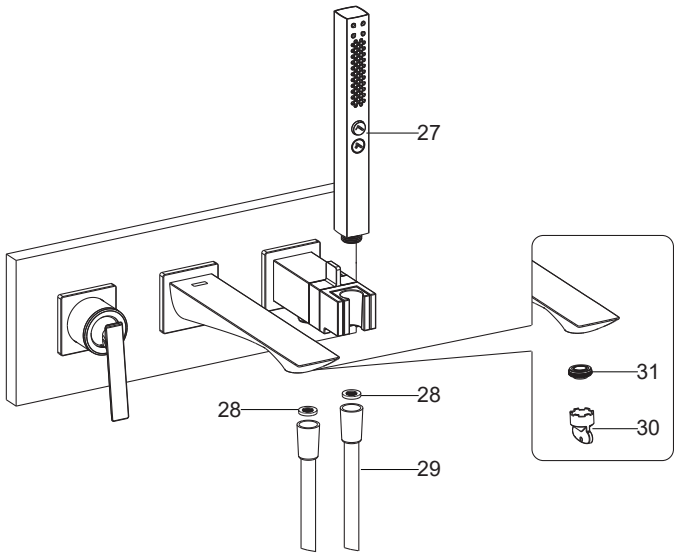
How to Install the Handshower

If needed, install the regulator(26) into the handshower(27). Put the washers(28) into the hose(29). Connect hose to the connector(25) and handshower. Tighten all the connections.

Hang the handshower on the bracket(22).

安装结果检查

INSTALLATION CHECKOUT



检查并确保所有衔接螺母都已拧紧，确保把手在关闭位置。

用工具(30)拆下起泡器(31)。并卸下手持花洒(27)。

打开主供水源，检查渗漏。打开冷热水阀，使水流出出水嘴，去除杂物，冲洗起泡器。切换到手持花洒，去除杂物，清洗垫片(28)，关闭阀。重新装回起泡器和手持花洒。

Ensure that all connections are tight. Ensure that the handle is in the off position.

Uninstall the aerator(31) with tool(30). Uninstall the handshower(27).

Turn on the main water supply and check for leaks. Open valve and run water through the spout to remove any debris. Remove any debris from the aerator. Switch to handshower and remove debris from washer(28). Turn off the valve. Reinstall the aerator and handshower.