

# 安装说明

## 柱式台盆

记录您的型号:

Record your model number: \_\_\_\_\_

English, page 8

**KOHLER®**

1661617-T2-B

# 感谢您选择科勒

---

**需要帮助？** 请联系我们的客户服务中心。

- 中国大陆：+(86) 800-820-2628, +(86) 400-820-2628
- 中国香港、中国澳门、中国台湾：+(852) 3125-7728
- 保养和清洁：[kohler.com.cn/support/care-and-cleaning/](http://kohler.com.cn/support/care-and-cleaning/)

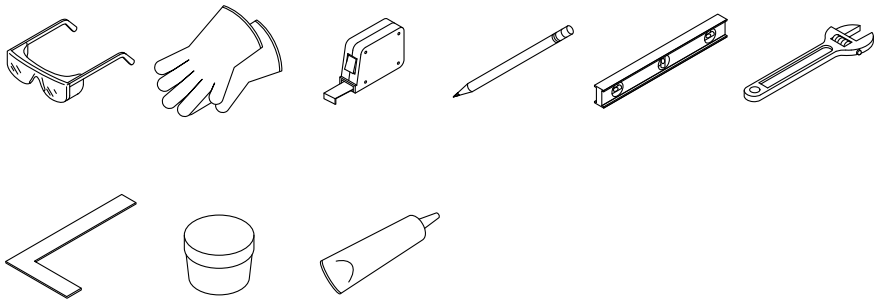
## 质保

---

本产品**在科勒®卫浴产品的 3 年有效质保范围内**，详见所附的《合格证》。

## 所需工具和材料

---



管道油灰    100% 密封硅胶

**以及：**

- 常规管道工具和材料
- （可选）与排污管适配的落水器转接头

# 开始之前

---



**警告：** 存在人身伤害风险。如果在处理时不加以注意，人造石台盆可能会开裂、碎裂或造成人身伤害。找人帮忙抬起和安装本产品。

**重要信息!** 此安装需要一个墙出水龙头。在冬季气温低于冰点的地区，计划将本产品安装在室内，以防止供水和排水管道冻结。

**重要信息!** 科勒强烈建议按照本安装指南使用 100% 密封硅胶。其他密封硅胶可能会随着时间的推移而收缩、分离和脱落。

**重要信息!** 确认底层地板状况良好。如有必要须维修或更换地板。

**重要信息!** 严禁使用毛刷或钢丝绒等磨砂材料清洁台盆表面。避免清洁剂浸泡表面。注意不要让染色材料与表面长时间接触。

**重要信息!** 在喷涂清洁剂到整个表面之前，务必在不显眼的区域测试清洁剂。喷涂清洁剂后，立即将台盆表面擦拭干净并用水彻底冲洗干净。周围表面如喷涂过量，应冲洗后晾干。

请遵守当地管路安装及建筑条例。

安装前，打开新台盆的包装，检查产品是否损坏。在准备好安装产品之前，请将台盆放回其包装箱中。

将柱式台盆安装到完工地面上。

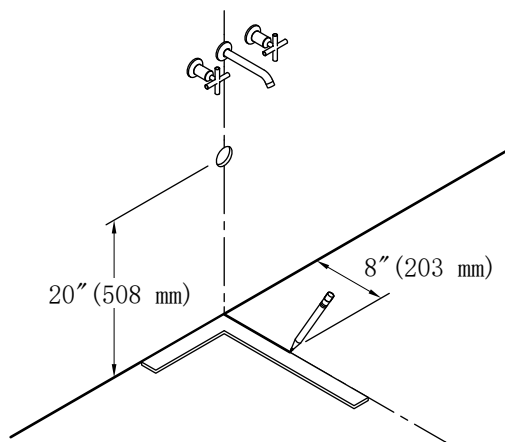
在继续安装之前，确保墙壁和地板呈方正、垂直且水平。

所示尺寸均为标称值，遵循 ASME A112.19.2/CSA B45.1 的公差。

本产品符合 JC/T 2116-2012。

## 1. 准备安装场地

---

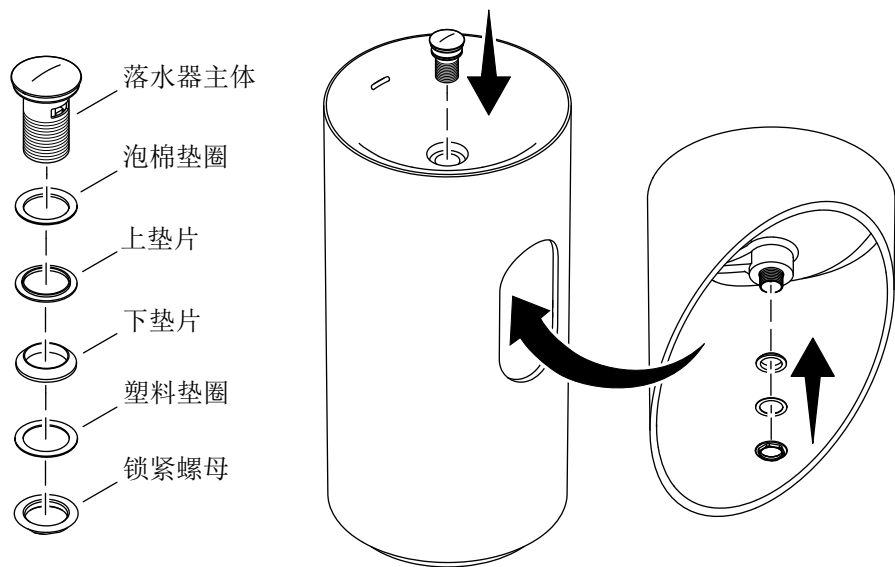


**重要信息!** 在安装柱式台盆之前，先安装墙出水龙头。您可以根据您选择的水龙头，将柱式台盆放置在离墙壁正确距离的位置。

**注：** 本产品支持墙面排水和地面排水两种方式。图中排水口位置仅供参考。客户需要根据选择的墙排或地排水管样式规格定义排水口的具体位置。

- ☐ 根据水龙头和柱式台盆的尺寸信息确定墙出水龙头的高度。
- ☐ 安装墙出水龙头的供水和排水管。请参阅水龙头尺寸信息。
- ☐ **墙面排水：** 从地面向上量出 20"（508 mm）的高度，并用铅笔标出排水口的位置。
- ☐ **地面排水：** 从墙上量出 8"（203 mm）并用铅笔标出排水口的位置。
- ☐ 根据水龙头附带的说明书安装墙出水龙头。
- ☐ 用铅笔在地板上标出水龙头中心线。

## 2. 安装落水器



**警告：** 存在人身伤害风险。如果在处理时不加以注意，人造石台盆可能会破裂、碎裂或造成人身伤害。找人帮忙抬起和安装本产品。



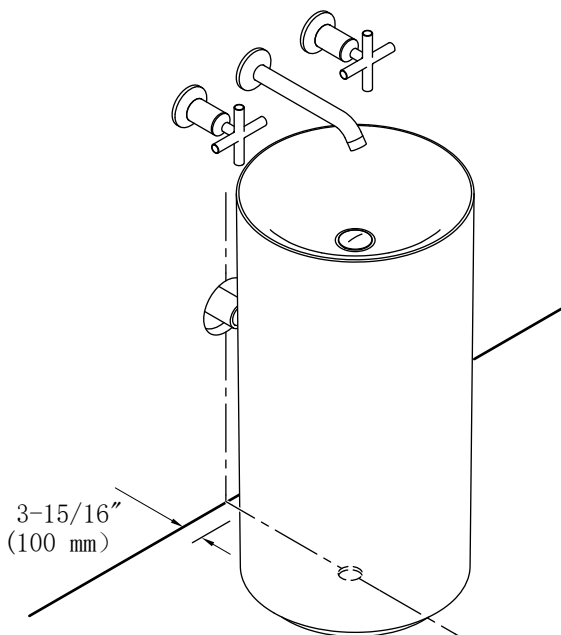
**小心：** 存在产品受损和漏水的风险。锁紧螺母拧紧后，请勿调整落水器的位置。试图调整可能会损坏管道油灰或 100% 密封硅胶密封并造成漏水。

**注：** 如需要，在落水器主体的底部涂上一圈管道油灰或 100% 密封硅胶。

- ☐ 从落水器主体上拆下锁紧螺母、塑料垫圈和下垫片。
- ☐ 从柱式台盆上方将已安装泡棉垫圈和上垫片的落水器主体插入排水孔中。
- ☐ 从柱式台盆开孔处将下垫片（锥形面朝上）、塑料垫圈和锁紧螺母安装到落水器主体上。
- ☐ 拧紧螺母。

### 3. 放置柱式台盆

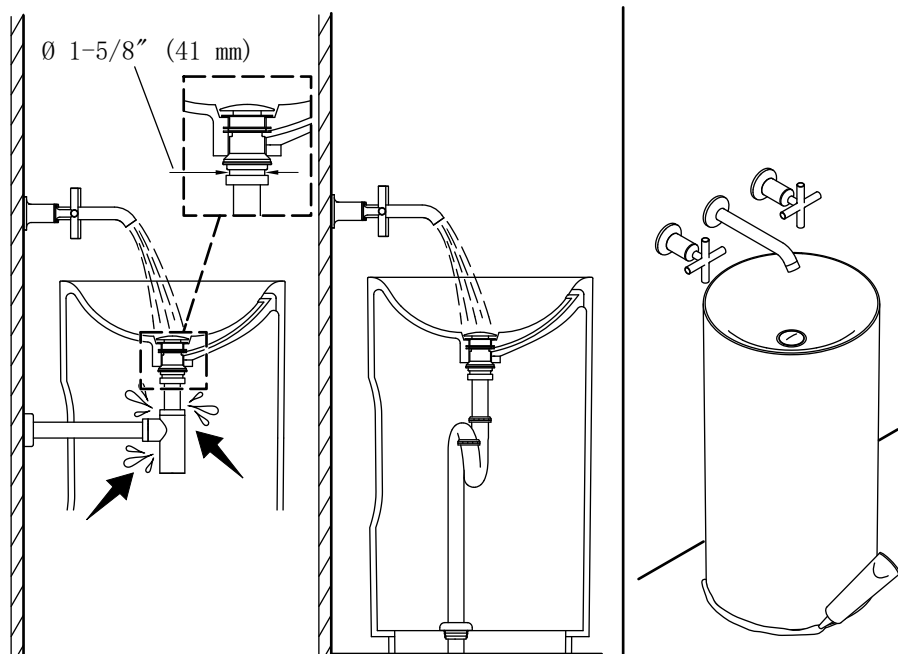
---



**警告：存在人身伤害风险。如果在处理时不加以注意，人造石台盆可能会开裂、碎裂或造成人身伤害。找人帮忙抬起和安装本产品。**

- ☐ 如图所示，将柱式台盆放置在其边缘距离墙壁 3-15/16"（100 mm）的位置，并以水龙头中心线标记为中心。
- ☐ 确认柱式台盆上的开孔朝向墙壁。
- ☐ 如需要，小心地调整柱式台盆的位置。

## 4. 安装柱式台盆



**重要信息!** 科勒强烈建议按照说明使用 100% 密封硅胶。其他密封硅胶可能会随着时间的推移而收缩、分离和脱落。

- ☐ 本产品支持墙面排水或地面排水。将排污管连接并紧固到落水器上。
- ☐ **可选：** 随附的落水器螺牙接口直径为 1-5/8"（41 mm）。根据您的排污管情况，视需要通过落水器转接头（未随附）完成排污管与落水器的连接。
- ☐ 放水入柱式台盆并检查连接处有无漏水。
- ☐ 在柱式台盆底座和地板之间的接缝处连续涂上一层透明的 100% 密封硅胶。
- ☐ 确认 100% 密封硅胶填充在柱式台盆底座和完工地面周围的整个接缝处。

# Installation Instructions

## Pedestal Bathroom Sink

### Thank You for Choosing KOHLER

---

**Need help?** Contact our Customer Care Center.

- Mainland China: +(86) 800-820-2628, +(86) 400-820-2628
- Hong Kong (China), Macau (China), Taiwan (China): +(852) 3125-7728
- Care and cleaning: [kohler.com.cn/support/care-and-cleaning/](http://kohler.com.cn/support/care-and-cleaning/)

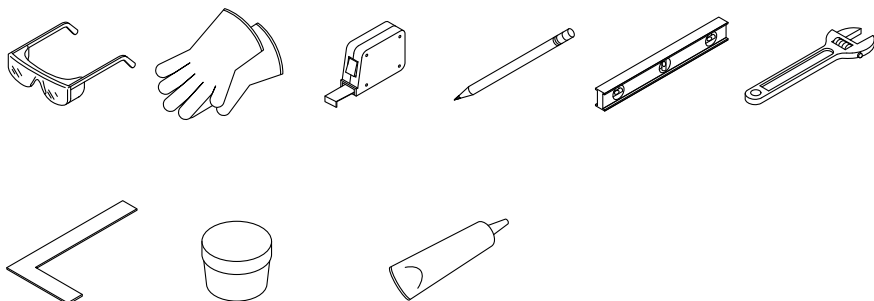
### Warranty

---

This product is covered under the **Three-Year Limited Warranty for KOHLER® Plumbing Products**, found in the packed Compliance Certification.

### Required Tools and Materials

---



Plumbers Putty   100% Silicone Sealant



**Plus:**

- Conventional plumbing tools and materials
- (Optional) Drain adapter compatible with your trapway

## Before You Begin

---



**WARNING: Risk of personal injury.** The lithocast bathroom sink can break, chip, or cause injury if the product is handled carelessly. Get help lifting and installing this product.

**IMPORTANT!** This installation requires a wall-mounted faucet. In areas with subfreezing winter temperatures, plan to install this product to an interior wall to protect the water supply and drain lines from freezing.

**IMPORTANT!** Kohler Co. strongly recommends the use of 100% silicone sealant as instructed in this installation guide. Other sealants may shrink, separate, and peel over time.

**IMPORTANT!** Verify that the subfloor is in good condition. Repair or replace the subfloor if necessary.

**IMPORTANT!** Never use an abrasive material such as a brush or scouring pad to clean the pedestal bathroom sink surface. Do not allow cleaners to soak on surfaces. Be careful not to leave staining materials in contact with the surface for extended periods of time.

**IMPORTANT!** Always test your cleaning solution on an inconspicuous area before applying to the entire surface. Wipe the pedestal bathroom sink surface clean and rinse completely with water immediately after applying cleaner. Rinse and dry any overspray that lands on nearby surfaces.

Follow all local plumbing and building codes.

Before installation, unpack the new pedestal bathroom sink and inspect the product for damage. Return the pedestal bathroom sink to its protective carton until you are ready to install the product.

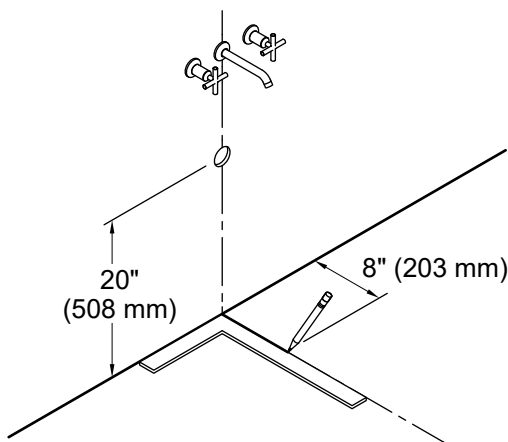
Install this pedestal bathroom sink to the finished floor.

Verify that the walls and the floor are square, plumb, and level before proceeding with the installation.

The dimensions as shown are nominal and conform to tolerances in ASME A112.19.2/CSA B45.1.

The product complies with JC/T 2116-2012.

# 1. Prepare the Site

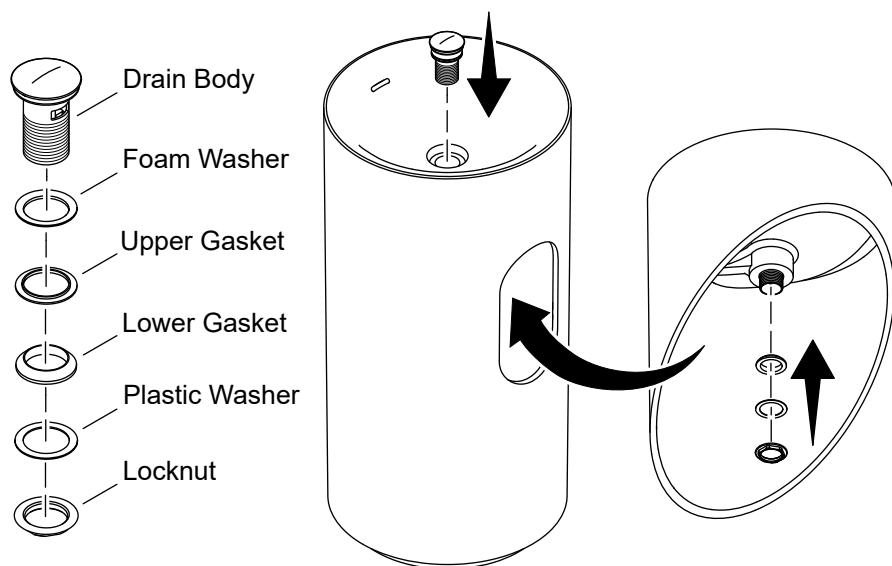


**IMPORTANT!** Install the wall-mounted faucet before installing the pedestal bathroom sink. This will allow you to position the pedestal bathroom sink at the correct distance from the wall for your chosen faucet.

**NOTE:** This product supports wall drainage and floor drainage. The locations of the drainage outlet in the figure are for reference only. The customer can decide the specific location of the drainage outlet based on the wall or floor drainage pipe.

- ☐ Determine the wall-mounted faucet height based upon the faucet and pedestal bathroom sink roughing-in information.
- ☐ Install the water supplies and drain pipe for the wall-mounted faucet. Refer to the faucet roughing-in information.
- ☐ **Wall Drainage:** From the floor, measure above 20" (508 mm) and mark the drainage outlet location with a pencil.
- ☐ **Floor Drainage:** From the wall, measure 8" (203 mm) and mark the drainage outlet location with a pencil.
- ☐ Install the wall-mounted faucet according to the instructions provided with the faucet.
- ☐ Use a pencil to mark the faucet centerline on the floor.

## 2. Install the Drain



**WARNING: Risk of personal injury.** The lithocast bathroom sink can break, chip, or cause injury if the product is handled carelessly. Get help lifting and installing this product.



**CAUTION: Risk of product damage and water leakage.** Do not adjust the drain location once the locknut has been tightened to secure the drain. Trying to do so may break the plumbers putty or 100% silicone sealant seal and cause water leakage.

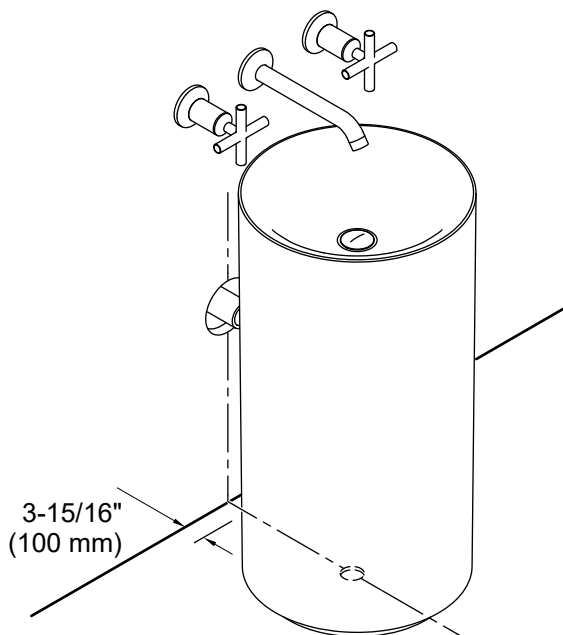
**NOTE:** If required, apply a ring of plumbers putty or 100% silicone sealant around the underside of the drain body.

- ☐ Remove the locknut, the plastic washer, and the lower gasket from the drain body.
- ☐ From above the pedestal bathroom sink, insert the drain body preinstalled with the foam washer and the upper gasket through the drain hole.

- ☐ Through the cutout on the pedestal bathroom sink, install the lower gasket (tapered side up), the plastic washer, and the locknut onto the drain body.
- ☐ Tighten the locknut.

### 3. Position the Pedestal Bathroom Sink

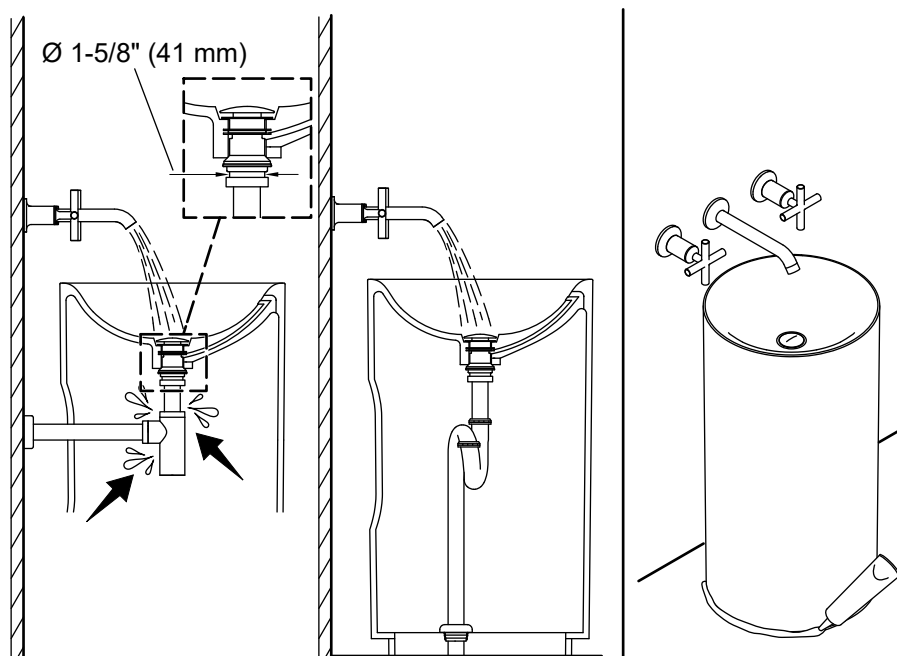
---



**WARNING: Risk of personal injury.** The lithocast bathroom sink can break, chip, or cause injury if the product is handled carelessly. Get help lifting and installing this product.

- ☐ Position the pedestal bathroom sink with the sink edge 3-15/16" (100 mm) away from the wall, and centered on the faucet centerline mark, as shown.
- ☐ Verify that the cutout on the pedestal bathroom sink faces toward the wall.
- ☐ Carefully reposition the pedestal bathroom sink, if needed.

## 4. Install the Pedestal Bathroom Sink



**IMPORTANT!** Kohler Co. strongly recommends the use of 100% silicone sealant as instructed. Other sealants may shrink, separate, and peel over time.

- ☐ This product supports wall drainage or floor drainage. Connect and tighten the trapway to the drain.
- ☐ **Optional:** The drain thread diameter is 1-5/8" (41 mm). Depending on your trapway, use a compatible drain adapter (not provided) to complete drain connection.
- ☐ Run water into the pedestal bathroom sink and check the connections for leaks.
- ☐ Apply a continuous bead of clear, 100% silicone sealant to the seam between the pedestal and the finished floor.
- ☐ Verify that the 100% silicone sealant bead fills the entire seam around the pedestal and the finished floor.

[kohler.com.cn](http://kohler.com.cn)

THE BOLD LOOK  
OF **KOHLER**®

©2025 Kohler Co.



1661617-T2

**1661617-T2-B**