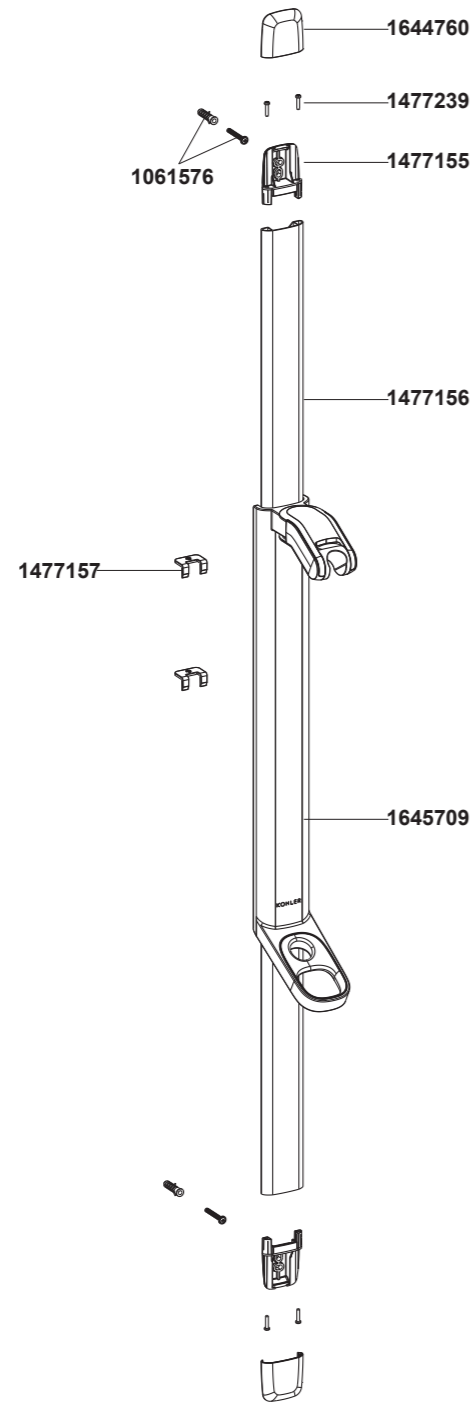


39574T 滑动花洒支架



**订购时请说明颜色编号
**Color code must be specified when ordering

39574T 滑动花洒支架

安装之前

所有的资料是按最新发布的产品资料编写而成。科勒公司保留任何时候不经通知即可改变产品特性、包装或产品可供类型的权利。

说明书包括重要的安装、保养及清洁方面的内容，请把这些资料交给用户阅读。

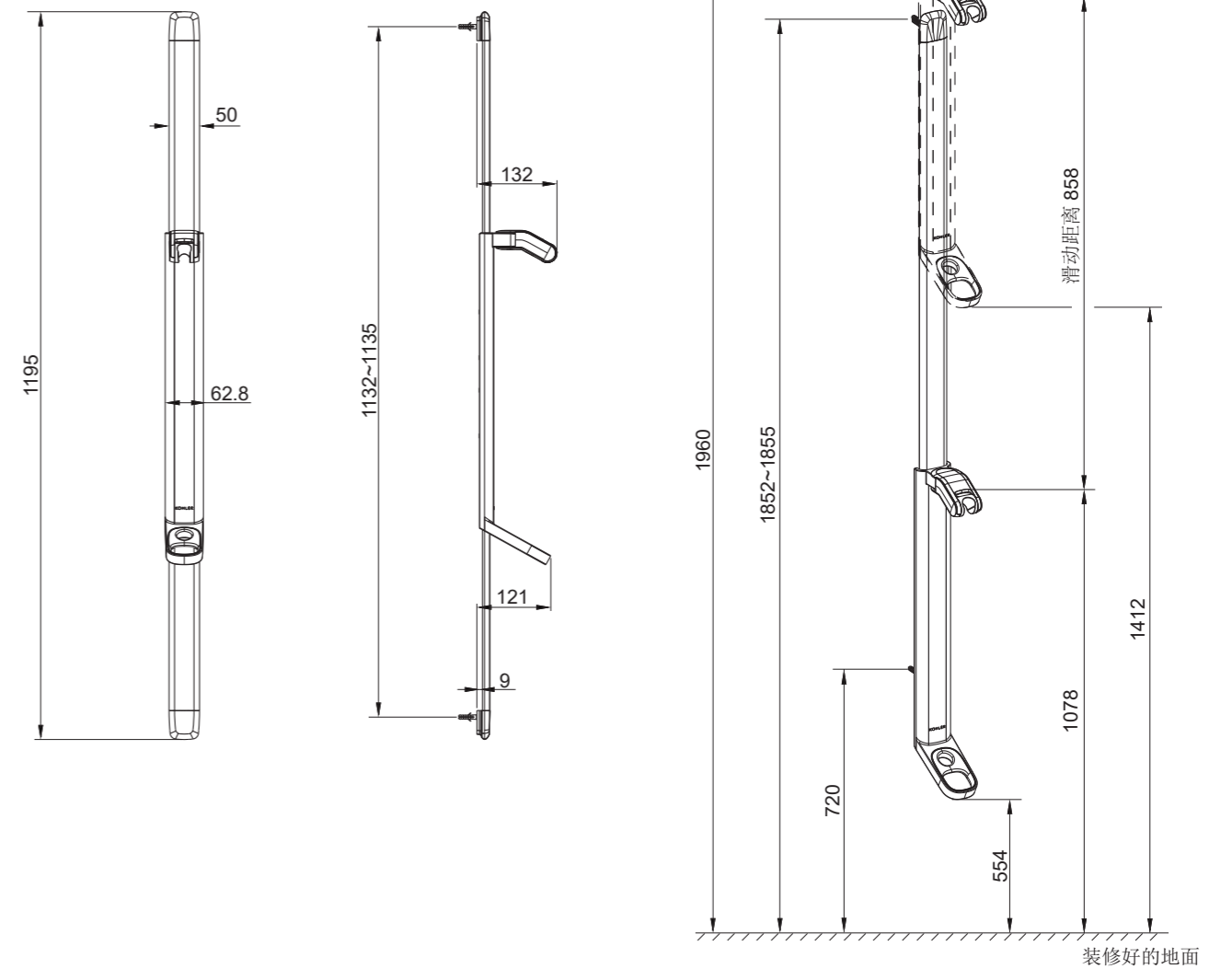
BEFORE YOU BEGIN

All information is based on the latest product information available at the time of publication. Kohler Co. reserves the right to make changes in product characteristics, packaging, or availability at any time without notice.

Please leave these instructions for the consumer. They contain important information.

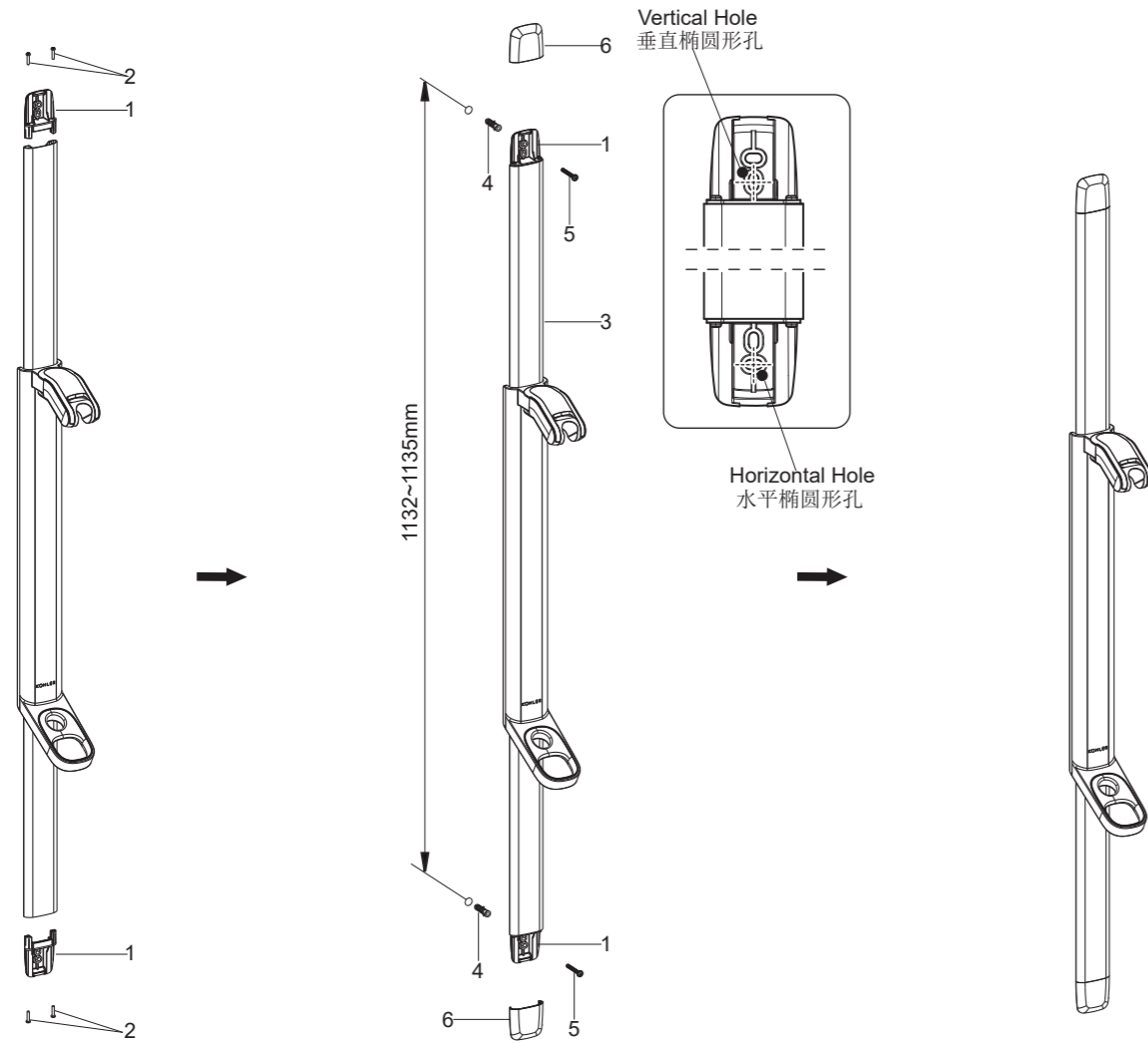
安装尺寸

ROUGH-IN DIMENSIONS



安装步骤

INSTALLATION



将上下支架(1)推入滑杆两端，并确保上下支架被牢牢推入。

拧紧上下两个螺钉(2)，将上下支架固定到滑杆上。

将滑杆组件(3)靠墙固定在所需位置。

根据安装尺寸用铅笔标记顶部和底部固定孔位。取下滑杆组件。**注意：**标记其中一个垂直椭圆形孔和一个水平椭圆形孔，以便对滑杆进行微调。

在墙上标记处钻 $\varnothing 8\text{mm}$ 的孔，将胀塞(4)放入孔中。将滑杆组件安装到墙上并拧紧螺钉(5)，确保滑杆组件垂直。

将装饰盖(6)安装在上下支架(1)上。

Push the end brackets(1) into the both ends of the slide bar and make sure that end brackets are pushed firmly.

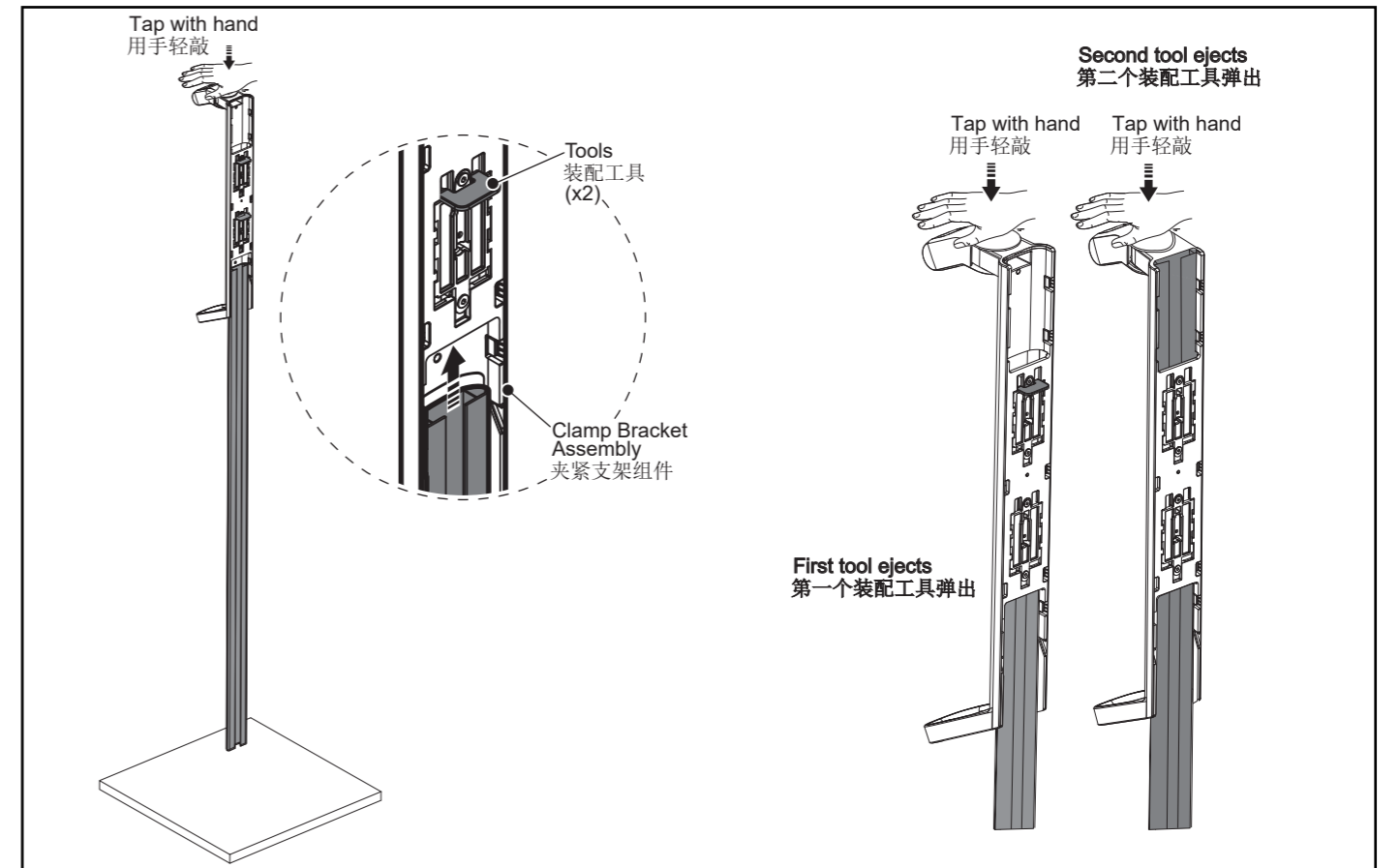
Tighten the two screws(2) to secure the end brackets onto the slide bar.

Hold the slide bar assembly(3) against the wall in the desired position.

Mark the location of the top and bottom fixing holes with a pencil as per rough-in dimension. Uninstall the slide bar assembly. **NOTE:** Mark one of the vertical oval holes and one of the horizontal oval holes to allow slight adjustments to the slide bar.

Drill two $\varnothing 8\text{mm}$ fixing holes and insert the wall plugs(4). Fit the slide bar assembly to the wall and tighten the screws(5), ensure the slide bar assembly is vertical.

Fit the caps over the end brackets(1).



附加说明：重新安装滑杆，请按如下步骤：

确保两个装配工具都完全按下。

将夹紧支架组件推到滑杆上，直到它到达止动块。

将组件垂直放置(在地板上放置一个保护罩)。

用手轻敲组件的顶部，直到第一个装配工具弹出。

将滑杆滑到夹紧支架组件上，直至下一个停止位置。

用手轻敲组件的顶部，直到第二个装配工具弹出。

注意：当夹紧支架组件安装到滑杆上时，工具将弹出。

清洗说明

适用于所有加工处理过的表面：以中性肥皂水清洗镀层表面，再以干净软布彻底擦干整个表面，许多清洁剂，比如氨水、去污粉及洁厕灵等，会对电镀表面造成伤害，切忌使用。

有磨损性的清洁用具或清洁剂也不可适用于科勒牌的水龙头及其配件上。

Additional note: Reinstall the slide bar, please follow the steps as follows:

Ensure both tools are fully pushed down.

Push the clamp bracket assembly onto the slide bar until it reaches a stop.

Place assembly upright in the vertical position (place a protective cover on the floor).

Tap on the top of the assembly with your hand until the first tool ejects.

Slide the slide bar onto the clamp bracket assembly to the next stop position.

Tap on the top of the assembly with your hand until the second tool ejects.

NOTE: The tools will eject as the clamp bracket assembly fits onto the slide bar.

CLEANING INSTRUCTIONS

All Finishes: Clean the finish with mild soap and warm water. Wipe entire surface completely dry with clean soft cloth. Many cleaners may contain chemicals, such as ammonia, chlorine, toilet cleaner etc. which could adversely affect the finish and are not recommended for cleaning.

Do not use abrasive cleaners or solvents on Kohler faucets and fittings.