



记录您的型号:

Record your model number: _____

小心: 存在人身伤害或产品损坏风险。如果处理不慎, 产品可能会破裂、碎裂或造成人身伤害。寻求帮助来提起产品。

重要信息! 向台面制造商提供您的台盆型号。使用台盆随附的开孔模板, 或联系客户服务中心并提供您的型号以获取最新的开孔模板。

请勿使用粘合剂或粘性密封剂来安装产品。

您的产品可能与图示不同。安装步骤相同。

请遵守当地管路安装及建筑条例。

阅读并遵守所有说明

保存说明书

其它所需工具和材料

1A. 100% 密封硅胶

1B. 钻孔机和 15 mm 钻头

1C. 油漆工胶带

1D. 线锯

安装步骤

2A. 检查排水管和柜子间隙。

2B. 确认台面边缘与柜体框架齐平。

3A. 在切割模板内侧之前, 沿折线在模板上折叠一条折痕。

3B. 沿模板的内侧线切割。

4A. 定位模板。描出切口。

5A. 在台面上钻导向孔。

5B. 沿着这条线切割台面和柜体。

6A. 将水槽置于切口中。调整至合适的位置。

7A. 用铅笔沿着台盆外边缘画线。移开台盆。

8A. 按照制造商的说明, 安装排水管和水龙头。

9A. 在铅笔线和切口之间的台面上涂抹 100% 密封硅胶。用油灰刀均匀涂抹 100% 密封硅胶。

10A. 小心地将水槽放入切口中, 然后用力向下按压。

11A. 从台面下方, 将固定框架安装到台盆上。

11B. 将螺栓 B 拧入固定框架。**此时切勿拧紧。**

12A. 将螺栓 A 拧入固定框架, 并用螺栓 A 尽可能将固定框架调平。

12B. 拧紧螺栓 B 以锁定固定框架。**不可过紧!**

13A. 在台面开孔周围涂抹 100% 密封硅胶。

14A. 立即擦掉多余的 100% 密封硅胶。按照制造商的说明, 使 100% 密封硅胶固化。

15A. 完成排水管与供水系统的连接。

16A. 放水并检查有无漏水。

需要帮助? 请联系我们的客户服务中心。

• 中国大陆: +(86) 800-820-2628, +(86) 400-820-2628

• **保养和清洁:** kohler.com.cn/support/care-and-cleaning/

本产品**科勒®卫浴产品**的 3 年有效质保范围内, 详见所附的《合格证》。

CAUTION: Risk of personal injury or product damage. Product can break, chip, or cause injury if handled carelessly. Get help lifting the product.

IMPORTANT! Provide your countertop manufacturer with your bathroom sink model number. Use the cut-out template provided with your bathroom sink or contact Customer Service with your model number for the latest cut-out template.

DO NOT use adhesives or adhesive sealants to install the product.

Your product may appear different than the one illustrated. The installation procedure is the same.

Follow all local plumbing and building codes.

READ AND FOLLOW ALL INSTRUCTIONS

SAVE THESE INSTRUCTIONS

Additional Required Tools and Materials

1A. 100% Silicone Sealant

1B. Drill and 15 mm Bit

1C. Painter's Tape

1D. Jigsaw

Installation Steps

2A. Verify the drain and cabinet clearance.

2B. Verify that the countertop edge is flush with the cabinet frame.

3A. Before cutting out the inside of the template, fold a crease into the template along the fold line.

3B. Cut along the inside line of the template.

4A. Position the template. Trace the cut-out.

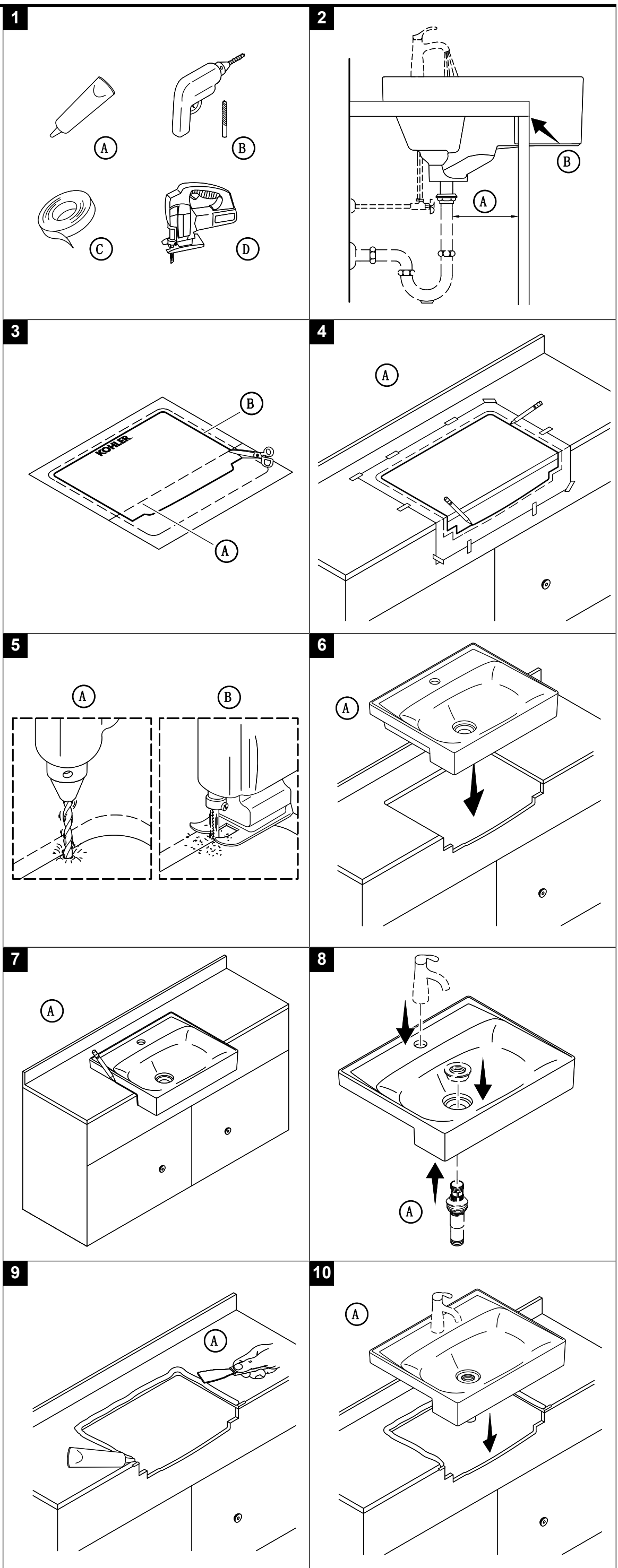
5A. Drill a pilot hole.

5B. Cut the countertop and cabinet along the line.

6A. Position the sink in the cutout. Adjust the cutout to accommodate the sink as needed.

7A. Trace a pencil line around the outside of the sink. Remove the sink.

8A. Install the drain and faucet following the manufacturer's instructions.



9A. Apply 100% silicone sealant to the countertop between the pencil line and cutout opening. Spread the 100% silicone sealant evenly with a putty knife.

10A. Carefully position the sink in the cutout and press down firmly.

11A. From underneath the countertop, install the mounting frame to the bathroom sink.

11B. Thread bolt B into the mounting frame. **Do not tighten at this time.**

12A. Thread bolt A into the mounting frame and level the mounting frame as much as possible with bolt A.

12B. Tighten bolt B to lock the mounting frame. **Do not overtighten!**

13A. Apply 100% silicone sealant around the countertop cutout hole.

14A. Immediately wipe away excess 100% silicone sealant. Allow the 100% silicone sealant to cure following the manufacturer's instructions.

15A. Complete the drain and water supply connections.

16A. Run water and check for leaks.

Need help? Contact our Customer Care Center.

• Mainland China: +(86) 800-820-2628, +(86) 400-820-2628

• **Care and cleaning:** kohler.com.cn/support/care-and-cleaning/

This product is covered under the **Three-Year Limited Warranty for KOHLER® Plumbing Products**, found in the packed Compliance Certification.

