



记录您的型号：  
Record your model number: \_\_\_\_\_

-  **警告：存在烫伤风险。**水温过高会导致严重灼伤。将阀芯水温设置为等于或低于 120°F (49°C)。请参阅阀芯的温度调节说明。
-  **小心：存在产品损坏和人身伤害风险。**产品应远离加热器。

**注：**本产品的最高工作压力为 0.5 兆帕（5 巴）。如果压力超过 0.5 兆帕（5 巴），请安装减压器。

请遵守当地管路安装及建筑条例。

淋浴器施加的水效标识表明本产品的水效等级等性能符合 GB 28378-2019《淋浴器水效限定值及水效等级》的要求，是产品符合性的一种标识。

- 1A.** 6 mm 钻头
- 2A.** 安装软管之前，先打开供水管，冲洗管道中的杂质（本品不包含软管）。
- 3A.** 先撕掉滤芯顶部和底部的保护贴膜，安装滤芯。定期更换滤芯。
- 4A.** 如有需要，安装花洒限流器。

请按第 6 - 9 步安装花洒托架。花洒托架可适用于组合套装中包含的两款花洒喷头。当使用其中一个花洒喷头时，可用花洒托架承托另一个花洒喷头。

- 7A.** 在标记位置钻 6 mm 的孔。
- 8A.** 确保底座卡扣面向下，安装胀塞，旋紧螺钉，使底座固定紧贴墙壁。
- 9A.** 将托架扣在底座上，使卡扣嵌入豁口。
- 10A.** 打开供水管，按压或摩擦花洒出水嘴，去除杂质或水垢。
- 11A.** 定期冲洗滤网垫圈，去除杂质。
- 12A.** 雨淋式（含 WaterMind 仿生驭水技术）
- 12B.** 微气泡水
- 12C.** 刷毛。在给宠物洗澡时，用刷毛轻轻地梳理宠物的毛发，以便进行更有效的清洁。
- 12D.** 暂停按钮。仅适用于临时关停水流。在给宠物洗澡结束后，请关闭龙头。
- 12E.** 皂液盖

**12F.** 泡泡功能开关。装填泡泡或不使用时，请置此旋钮于关闭状态。使用泡泡功能时，打开皂液盖，倒入适量的皂液到皂液容器内，然后打开泡泡功能开关，并选择云雾式出水模式。


- 12G.** 云雾式
- 12H.** 雨瀑式


**13A.** 如需更换花洒喷头，拆下原有的花洒喷头，更换另一个花洒喷头：将手柄上的接头对准插入花洒头对应的孔内，确保两端紧密贴合后，转动手柄直至紧固。

**需要帮助？** 请联系我们的客户服务中心。

- 中国大陆：+(86) 800-820-2628, +(86) 400-820-2628
- 中国香港、中国澳门、中国台湾：+(852) 3125-7728
- 保养和清洁：** [kohler.com.cn/support/care-and-cleaning/](http://kohler.com.cn/support/care-and-cleaning/)

本产品支持**科勒®水龙头五年有限担保**，详见包装所附的《合格证》。

 **WARNING: Risk of scalding.** High water temperature can cause severe burns. Set the valve water temperature at or below 120°F (49°C). Refer to the temperature adjustment instructions for the valve.

 **CAUTION: Risk of product damage and personal injury.** Keep the product away from a heater.

**NOTE:** The maximum operating pressure for this product is 0.5 MPa (5 bar). If the pressure exceeds 0.5 MPa (5 bar), install a pressure reducer.

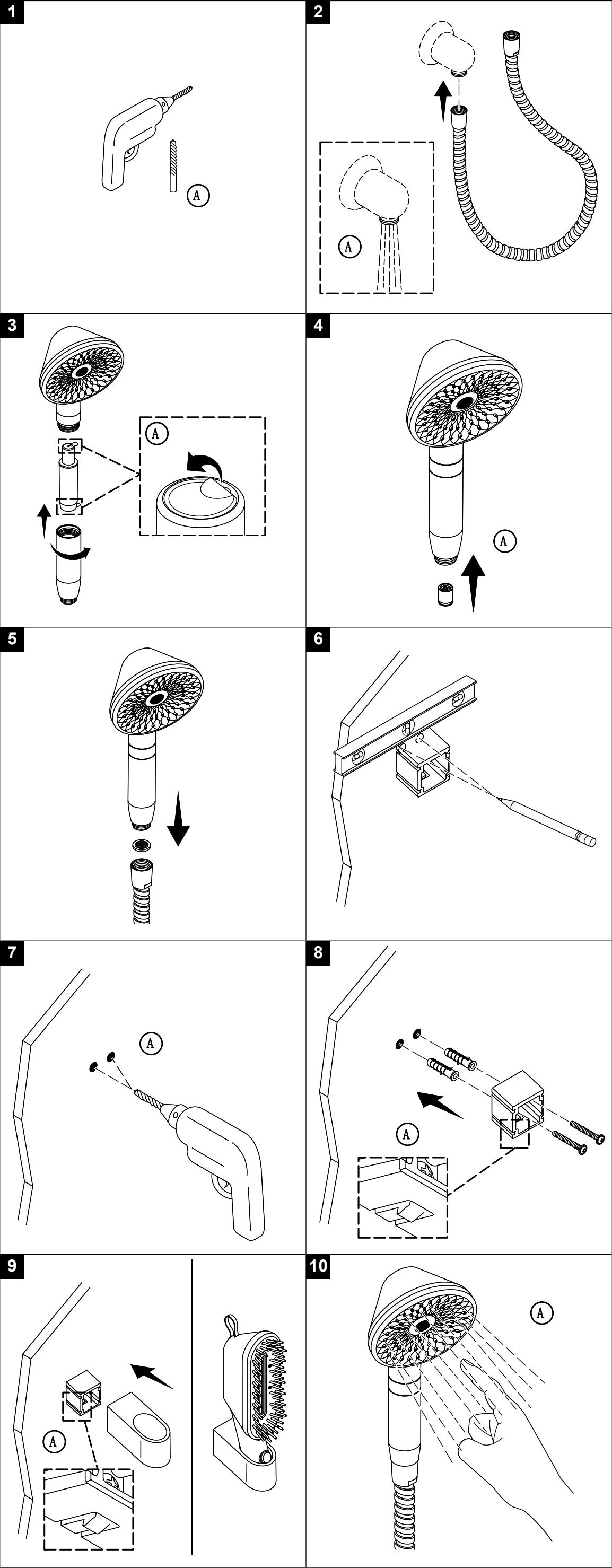
Follow all local plumbing and building codes.

The water efficiency label applied to the shower indicates that the water efficiency grade and other performance of the product meet the requirements of GB 28378-2019 "Minimum Allowable Values of Water Efficiency and Water Efficiency Grades for Showers," which is a marking of product conformity.

- 1A.** 6 mm Drill Bit
- 2A.** Flush debris before installing the hose (not provided).
- 3A.** Remove the protective film from each side of the filter before installing the filter. Periodically replace the filter.
- 4A.** If required, install the flow restrictor.

Follow Step 6 - Step 9 to install the handshower holder. The handshower holder fits both the handshower faceplate and the pet shower faceplate in the kit. Use the handshower holder to hold one faceplate while the other faceplate is in use.

- 7A.** Drill 1/4" (6 mm) pilot holes at the marked locations.
- 8A.** Verify that the bracket base is installed with the stopper side facing downward.
- 9A.** Secure the bracket onto the bracket base and locked into place by the stopper.
- 10A.** Periodically rub debris from the nozzles while water is running.
- 11A.** Periodically rinse debris from the screen washer.
- 12A.** Rain with WaterMind Technology
- 12B.** MicroBubble Spray
- 12C.** Brush Bristle. Gently groom your pet with the bristles during pet bathing for more effective cleaning.
- 12D.** Pause Button. Press the pause button to only temporarily interrupt the flow of water. Shut OFF the valve after you finish showering your pet.
- 12E.** Soap Cover
- 12F.** Soap ON/OFF. Turn OFF the soap switch when refilling the soap or not in use. To activate the soap function on the pet shower, open the soap cover to



fill the soap tank with the appropriate amount of soap. Then, turn ON the soap switch and select the cloud spray mode.

**12G.** Cloud Spray

**12H.** Ribbon Spray

**13A.** If needed, change the faceplate. Remove the handshower faceplate. Insert the protruding end of the quick connector on the handle into the cut-out slot at the other end of the connection on the pet shower faceplate. Verify the two ends fit into place. Turn the handle until the handle is secure.

**Need help?** Contact our Customer Care Center.

- Mainland China: +(86) 800-820-2628, +(86) 400-820-2628
- Hong Kong (China), Macau (China), Taiwan (China): +(852) 3125-7728
- **Care and cleaning:** [kohler.com.cn/support/care-and-cleaning/](http://kohler.com.cn/support/care-and-cleaning/)

This product is covered under the **Five-Year Limited Warranty for KOHLER® Faucets**, found in the packed Compliance Certification.

