

KOHLER

MIRRORED CABINET 600mm (CLOUD VERSION)
镜柜 600mm (云智能版)


K-29828T-XL/K-29828T-XR K-29828T-L/K-29828T-R/K-28618T-L/K-28618T-R

GROOMING 悦明
INSTALLATION INSTRUCTIONS
安装说明书
MIRRORED CABINET 600mm
镜柜 600mm

BEFORE YOU BEGIN

安装之前

- Please read these instructions carefully to familiarize yourself with the required tools, materials, and installation sequences. Follow the sections that pertain to your particular installation. This will help you avoid costly mistakes. In addition to proper installation, read all operating and safety instructions.
- All information in these instructions is based upon the latest product information available at the time of publication. Kohler China reserves the right to make changes in product characteristics, packaging, or availability at any time without notice.
- These instructions contain important care, cleaning, and warranty information—**please leave instructions for the consumer.**
- Before installation carefully inspect the new fixture for any signs of damage.
- The product complies with GB/T10357.4-2013, GB/T10357.5-2013, GB24977-2010, GB19510.1-2009, GB19510.14-2009 and GB7000.1-2015.

 **WARNING: Risk of electrical shock.** A licensed electrician should make all electrical connections.

 **WARNING: Risk of electrical shock.** Connect only to a circuit protected by a typical two-pole circuit breaker.


 **WARNING: Risk of electrical shock.** Disconnect power before servicing.


- 请仔细阅读本指引，以便熟悉所需工具、材料及安装程序。请遵照适用的章节来安装本产品，以免安装失当导致不必要的损失。除了有关正确的安装方法之外，还务请详阅所有操作及安全指引。

- 本指引所载之一切资料，均以印刷时所有之最新产品情况为基础，科勒中国保留权利随时更改产品特性、包装或供应情况，恕不另行通知。

- 说明书包括重要的安装、清洁及保养方面的内容，**请把这些资料交给用户阅读，保管。**
- 安装之前，仔细检查产品是否有损伤。

- 本产品符合 GB/T10357.4-2013, GB/T10357.5-2013, GB24977-2010, GB19510.1-2009, GB19510.14-2009 和 GB7000.1-2015。

 **警告：有触电的危险。**请找合格的电工来进行所有的线路连接。

 **警告：有触电的危险。**仅能和双极型断路器保护的电路连接。

 **警告：有触电的危险。**工作之前先切断电源。

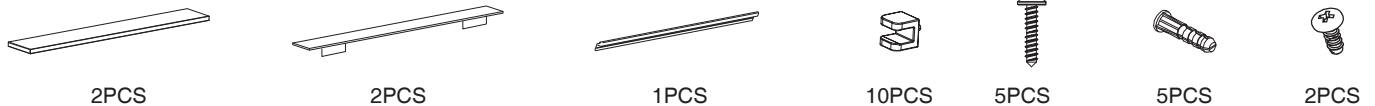
TOOLS REQUIRED

所需工具



ACCESSORIS LIST

随附清单



2PCS

2PCS

1PCS

10PCS

5PCS

5PCS

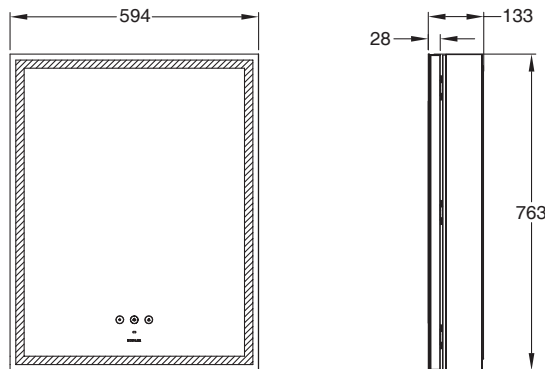
2PCS

ROUGHING-IN

尺寸图

Reference Value
参考值

UNIT: mm
单位：毫米



Kohler reserves the right to change marked dimensions without prior notice.
科勒公司保留随时变更图中标示尺寸的权利，无需另行通知。

ZHONGSHAN KOHLER SHOWER CO., LTD. NO13-1, XINGYE ROAD, ZHONGSHAN TORCH
DEVELOPMENT ZONE, ZHONGSHAN, GUANGDONG, CHINA POST CODE: 528437
中山科勒卫浴有限公司 广东省中山市中山火炬开发区兴业路 13-1 号 邮编:528437

ELECTRICAL PARTS LIST

电器部件清单

Item 序号	Electrical Function 电器功能	Type Description 规格描述	Fixate Place 安装位置
1	Defogger 防雾膜	Input: DC24V, Pmax=15W	Back of outer-mirror 贴外镜背面
2	Lighting 灯具	Input: DC24V, Pmax=35W	Back of outer-mirror 贴门体型材

INSTALLATION

安装

Cabinet Installation

柜体安装

STEP1: Drill holes
安装步骤一：钻安装孔

Drill holes - Ø 6mm
钻孔 - Ø 6mm

Fix the mounting bar to the wall, level the mounting bar.
托承条固定到墙上，保持水平。

Mirror cabinet plus holes width 800mm and above
镜柜宽度800mm及以上加此孔

≥ 40 mm from top part of the countertop (such as faucet)
距台面最高点（如水龙头把手）≥ 40
(1150mm) To Floor
(1150mm) 至地面

STEP2: Install the mounting bar. Place it level and fix it.
The number of screw holes is based on the actual product.
安装步骤二：安装托条，水平放置并固定。螺钉孔数量以实物为准。

STEP3: Fix the cabinet
安装步骤三：固定柜体

- Put the cabinet on the mounting bar.
- Insert top clips from the center of the top. Slide the clips to align with the drilled holes. Fix with screws.
- 从中间缺口嵌入顶扣在柜顶，滑动顶扣，对准上一步骤的钻孔后，用螺钉固定。

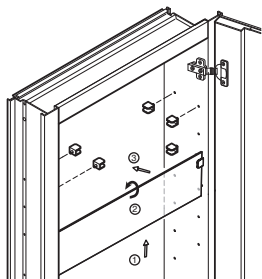
Top Clip
顶扣

Cabinet
柜体

Mounting Bar
托条

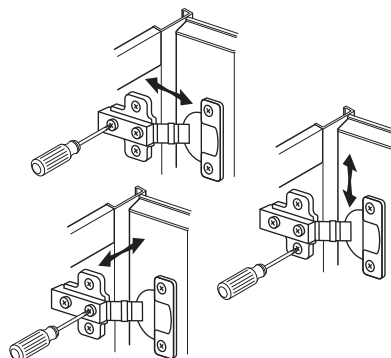
Installation and Adjustment of Accessories 配件安装及调节

STEP1: Install the clips. Insert the shelves between the clips. Insert the glass shelf into the snap-in pins, insert the glass shelf vertically upwards and then rotate to horizontal position.
 安装步骤一：安装夹子，将层板玻璃垂直插入层板夹，再旋转水平后推入另一排层板夹中。



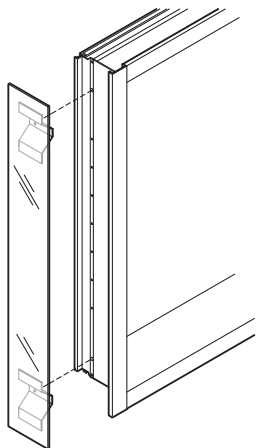
STEP2: If needed, align the door.

安装步骤二：若有需要，可对柜门进行调整。



Installation of Side Mirror 侧镜安装

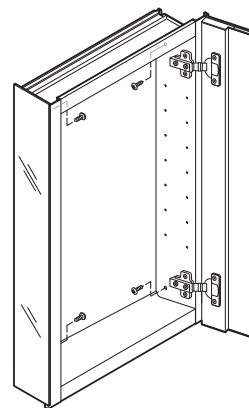
STEP1: Align the brackets with the mounting holes.
 安装步骤一：将支架与安装孔对齐。



STEP2: Secure the brackets with the round-headed short screws.
 安装步骤二：用圆头短螺钉将支架固定。

Note: When installed by cabinet splicing, side mirrors need not be installed on the cabinet side.

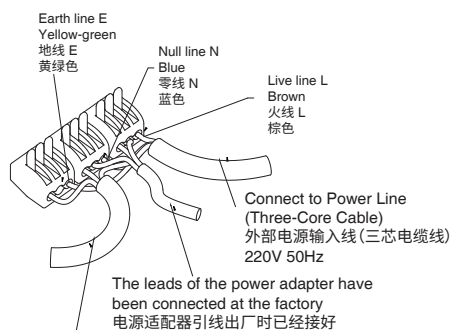
注意：拼柜安装时，拼柜侧不用安装侧镜。



Power line connection 电源线接入

STEP1: Wiring.

安装步骤一：接线。



The leads of the power socket have
been connected at the factory
电源插座引线出厂时已经接好

Note:

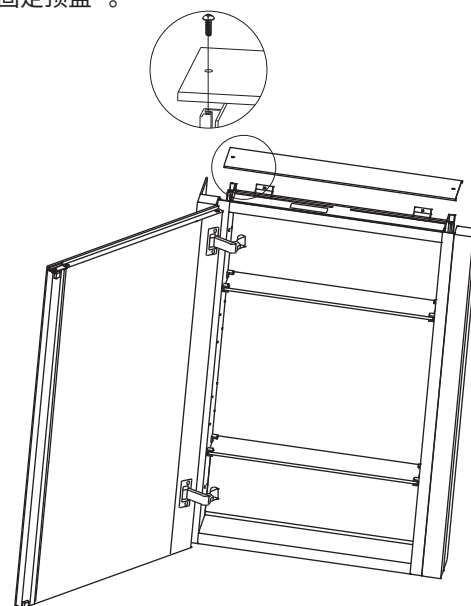
- 1) Power of the electrical equipments connected to the socket shall not exceed 2000W.
- 2) Wiring description and picture content.

注:

- 1) 电源插座外接电器总功率不能超过2000W.
- 2) 接线方式的描述及图片内容。

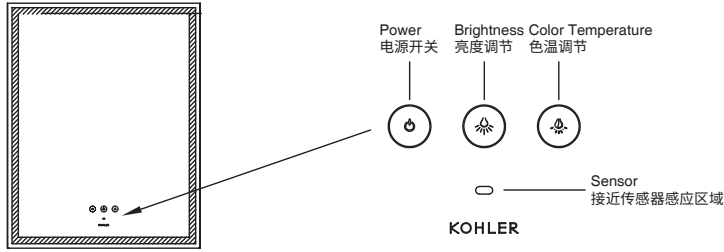
STEP2: Fix top cover.

安装步骤二：固定顶盖。



Button Functions

镜柜按键功能说明



Button Functions

按键功能说明

Light & Defogger On/Off 单击效果 镜灯与防雾膜开/关闭	Lux +/- (3 level loop) 亮度 +/- (3档循环)	Color temp. +/- (3 level loop) 色调 +/- (3档循环)
Long-Press 长按效果	Manual/Auto Mode Switch 手动/自动模式开关	Quick switching between levels 在不同的档位间快速切换

Status Indication 状态显示

- Manual mode/on (light blue upon being pressed)
手动模式/工作状态 (点击时效果是蓝色)
- Auto mode/on (light white upon being pressed)
自动模式/工作状态 (点击时效果是白色)
- Not operable/Closed
不可操作/关闭状态

Manual Mode

手动模式

<p>1. The manual mode is enabled by default. After power on, the light remains off and the power button lights white.</p> <p>1. 出厂默认手动模式, 通电后镜灯不亮, 电源键亮白灯。</p>	<p>2. After the power button is pressed, the light slowly goes on and the sensor remains off. The brightness and the color temperature buttons light white, in which case the brightness and color temperature may be switched by pressing these buttons or adjusted steplessly and cyclically by holding down these buttons. The defogger switches on at the same time.</p> <p>2. 点击电源键后, 镜灯缓慢亮起, 传感器处于关闭状态。亮度及色调键亮白色, 可单击换级/长按无级循环调整, 同时防雾膜开启。</p>	<p>3. After the power button is pressed again in front of the mirror, the light slowly goes off and the defogger closes after 30 minutes. The buttons enter into the factory set status. The brightness and the color temperature buttons go off and the brightness and the color temperature are unadjustable.</p> <p>3. 在镜前再次点击电源键后, 镜柜灯光缓慢熄灭, 防雾膜延迟30分钟关闭。按键恢复出厂上电状态, 亮度及色调键熄灭, 不可调节。</p>
--	--	--

Auto Mode

自动模式

<p>1. Press down the power button for 2 seconds. After the blue light flashes three times, the light enters into the Auto mode and the power button lights blue. The sensor starts (detecting that someone is in front of the mirror). The light automatically goes on. The brightness and the color temperature buttons light white, in which case the brightness and the color temperature may be switched by pressing these buttons or adjusted steplessly and cyclically by holding down these buttons.</p> <p>1. 长按电源键2秒, 蓝色效果闪烁三次后, 镜灯进入自动模式电源键变为蓝色。此时传感器启动(同时感应到人), 镜灯自动随之亮起。亮度/色调键亮白色, 可供单击换级/长按无级循环调整。</p>	<p>2. If you leave the cabinet in the Auto mode, the sensor detects that nobody is in front of the mirror and the light slowly goes off. The defogger closes after 30 minutes. The power/brightness and the color temperature buttons go off. The mirror stands by.</p> <p>2. 在自动模式状态下离开镜柜, 接近传感器感应到没人, 镜灯缓慢熄灭。防雾膜延迟30分钟关闭, 电源/亮度及色调键熄灭进入自动待机状态。</p>	<p>4. Pressing the power button in the Auto mode will turn off the light and return the system to the manual mode.</p> <p>4. 在自动模式下短按电源键, 则会直接关闭镜灯, 并让系统恢复为手动模式。</p>
<p>3. When someone gets close to the mirror, the light slowly goes on. The power button lights blue and the brightness/color temperature buttons keep lighting white. The brightness and the color temperature may be switched by pressing these buttons or adjusted steplessly and cyclically by holding down these buttons.</p> <p>3. 之后有人接近镜子感应区域, 镜灯缓慢亮起。电源键蓝灯亮起, 亮度/色调键维持白色。可供单击换级/长按无级循环调整。</p>	<p>The light goes off. The mirror returns to the manual mode and the initial manual set status.</p> <p>此时关闭镜灯, 系统恢复为手动模式, 回到手动上电初始状态。</p>	

Notes

- In the Auto mode, the light will remain on for 60 seconds after you leave the mirror and go off if the sensor detects that nobody is in front of the mirror after 60 seconds.
- In both Auto and manual modes, the defogger will remain on for 30 minutes after you leave the mirror and/or the mirror is switched off manually.
- In both Auto and manual modes, holding down the brightness and the color temperature buttons will steplessly adjust the brightness and the color temperature within the allowable ranges, so that you may freely select the desired brightness and color temperature.

其他注意点

- 自动模式下, 人离开灯会持续 60 秒长亮, 侦测没人在镜子前才会熄灭。
- 防雾膜在自动与手动模式下, 人离开 / 或是手动关闭后还会持续 30 分钟。
- 在自动与手动模式下, 若长按亮度与色调键, 则两者在可调范围内可进行无极切换, 用户可以随意选择所需的亮度与色调。

USER MAINTENANCE

日常维护

Warning! Risk of product damage.

警告! 小心产品受损。

The bathroom shall be kept in good ventilation. Clean the cabinet with water and soft cloth. Do not use detergent containing abrasive and chemical substance.

卫生间尽量保持空气畅通, 镜柜只能使用蘸有清水的湿布擦拭, 勿使用含研磨剂及化学物质的清洁剂。