

One. Normal pneumatic faceplate installation

Faceplate No.:

一. 常规气动面板安装方式

面板编号:

K-20341T-PNE

K-75890T-PNE

K-24149T

K-24151T

K-23055T-PNE

K-6283T-PNE

K-22525T-PNE

1. Supporting Board Installation

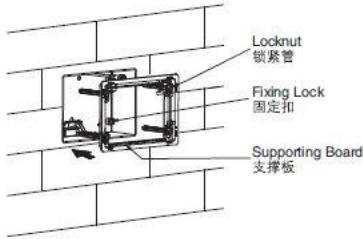
1. 支撑板安装方法

A. Faceplate press from front or remote installation of mask.

A. 适配前按及远程方外罩安装。

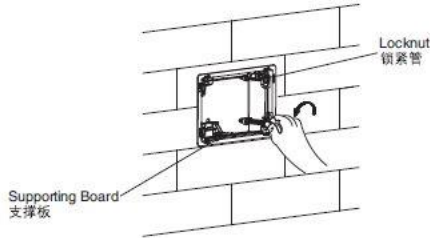
a. When tighten four locknuts on support board, adjust to "OPEN" mark as shown.

a. 如图将定位板装上时，把四个锁紧管调整在标识 "OPEN"字样装上。



b. Tighten four screws to "LOCK" mark after installing support board as shown.

b. 如图将定位板装完后，把四个锁紧管旋到"LOCK"字样即可。

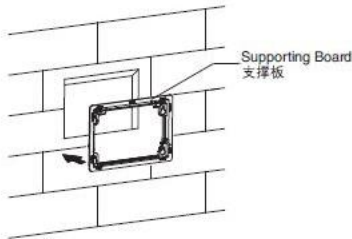


B. Faceplate press from front or remote pitch installation.

B. 适配远程扣板安装。

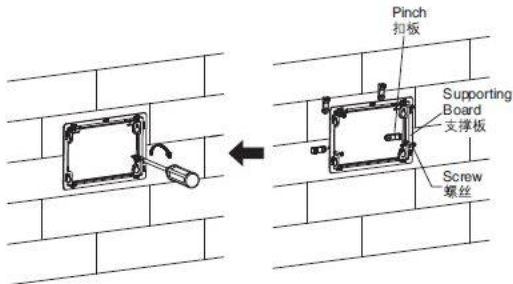
a. As shown, install supporting board.

a. 如图装上定位板。



b. Tighten screw, pinch to fix supporting board on the wall.

b. 如图用螺丝、扣板将定位板固定在墙上。



2. Hose connect

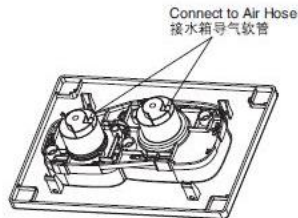
2. 气管连接

Connect full flush dark gray air hose and half flush blue air hose to the faceplate.

Note: Cut the excessive parts of the air hose if necessary, make the air hose smoothly.

如图将水箱的大冲深灰色和小冲蓝色气管装入面板。

注：根据实际情况将导气软管的多余部分切除，并理顺导气软管。



3. Fit faceplate

3. 面板固定

Put the lock on the cover directly on the reversed lock on supporting board, then push the cover and lock it. The installation shall begin from bottom to top.

将面板的扣位对准调节板的倒扣。然后用力向上推，再向前扣紧。安装时要注意从下而上安装。

