



OVE 欧芙
INSTALLATION INSTRUCTIONS
安装说明书
VITREOUS CHINA FLOOR STANDING TOILET
釉面陶瓷落地式座便器
K-99214T-C

BEFORE YOU BEGIN

- Please read these instructions carefully to familiarize yourself with the required tools, materials, and installation sequences. Follow the sections that pertain to your particular installation. This will help you avoid costly mistakes. In addition to proper installation, read all operating and safety instructions.
- All information in these instructions is based upon the latest product information available at the time of publication. Kohler China reserves the right to make changes in product characteristics, packaging, or availability at any time without notice.
- These instructions contain important care, cleaning, and warranty information-**please leave instructions for the consumer.**

安装之前

- 请仔细阅读说明书，熟悉所需工具、材料和安装顺序，参照相关章节完成您所需的安装，以避免昂贵的损失，除了正确的安装外，请详阅所有的操作和安全说明。
- 本说明书所含的一切资料均以印刷时所有的最新产品为准，科勒中国保留权利随时更改产品特性、包装或供应情况，恕不另行通知。
- 本说明书也包含了有关保养、清洁及产品担保等重要信息-请交予用户保存。

ORDERING INFORMATION

Ove Floor Standing Toilet.....	K-99214T-C
Includes Bowl	K-19965T
Includes Seat.....	K-2552A
Includes P trap	1138552
Includes S trap(Optional).....	1241939

Can Match with K-10611T-NA In-Wall Tank
Can Match with K-6286T-NA In-Wall Tank

订购信息

欧芙落地式座便器	K-99214T-C
含缸体	K-19965T
含盖板	K-2552A
含P弯管	1138552
含S弯管(选配).....	1241939

可适配 K-10611T-NA入墙式水箱
可适配 K-6286T-NA入墙式水箱

NOTES

- Observe all local plumbing and building codes.
- Shut off the water supply.
- Seat post holes are on 160mm centers.
- Passageways is 63mm.
- Ensure have the correct roughing-in dimensions. **See Fig.#1.**
- Be very careful while working with vitreous china products. Vitreous china can break or chip if the bolts or nuts are overtightened, or if carelessly handled.
- Carefully inspect the new bowl for any sign of damage.
- Fixture dimensions are nominal and conform to tolerances established by ASME Standards (A112.19.2-2013).
- The product complies with GB 6952-2005.

注意

- 请遵守当地所有给排水及建筑规定。
- 关闭供水。
- 座便器盖板孔中心间距为160mm。
- 排污通道为63mm。
- 确保安装尺寸正确，请参阅图1。
- 请小心处理釉面陶瓷产品，因其容易破损和崩裂，故不可把螺栓或螺母上得过紧，且须小心轻放。
- 请仔细检查座便器是否有损坏。
- 部件尺寸为标定值，误差符合美国机械工程师学会标准 ASME(A112.19.2-2013)。
- 本产品符合GB 6952-2005。

KOHLER CHINA INVESTMENT CO., LTD NO.158, JIANG CHANG SAN ROAD,
ZHABEI DISTRICT, SHANGHAI, PRC POST CODE: 200436
科勒(中国)投资有限公司 上海市闸北区江场三路158号 邮编: 200436

TOOLS AND MATERIALS REQUIRED (Not supplied)

- 254mm adjustable wrench
- Metal file (file cut)
- Tape measure
- Tubing cutter
- Level
- Hacksaw
- Putty knife
- Screwdriver
- Straight pipe coupling
- Connection packing

所需工具及材料(不随货供应)

- 254mm活动板钳
- 锉刀
- 卷尺
- 切管刀
- 水平尺
- 钢锯
- 涂油灰刀
- 螺丝刀
- 联结直管
- 联结组件

ROUGHING-IN

尺寸图

Reference Value
参考值

Unit: mm
单位: 毫米

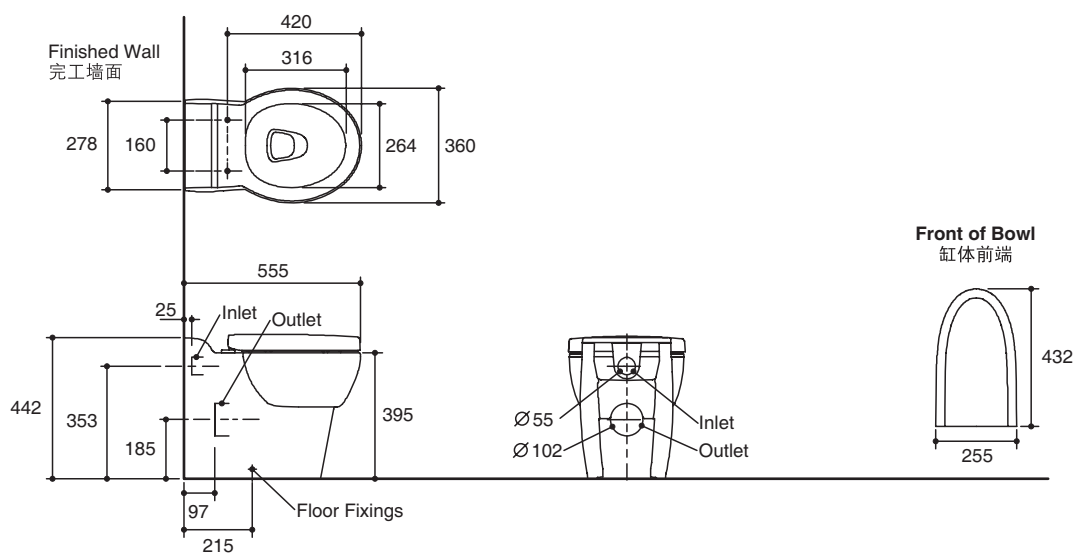


Fig.#1
图1

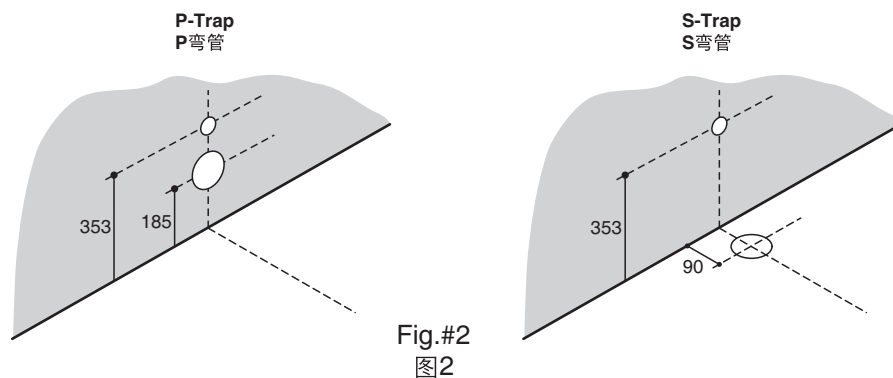
Kohler reserves the right to change marked dimensions without prior notice.
科勒公司保留随时变更图中标示尺寸的权利，无需另行通知。

INSTALLATION

安装

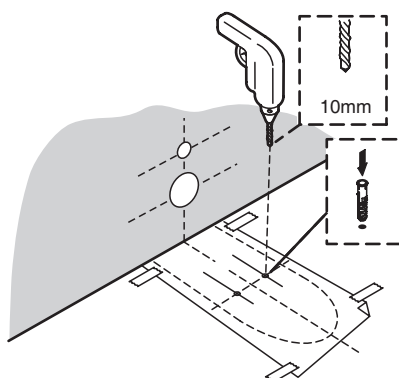
1. After installation of the tank, be careful to set the position for the bowl according to the dimensions.

1. 水箱安装完成后，根据图示尺寸，小心地在墙面上定好座便器的位置。



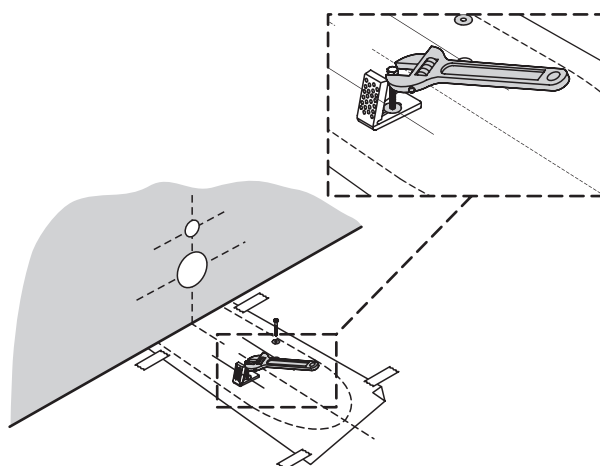
2. Position the template on the floor. Tape in place and drill 2 floor mounting holes. Insert anchors.

2. 将模板置于地面并用胶带固定。钻两个安装孔，插入膨胀螺栓。



- 3a. Position brackets as shown on the template and install the bracket.

- 3a. 如图所示，将支架置于模板上，然后安装支架。



3b. Fit flush pipe connector and gasket to the flush pipe inlet on the toilet. Fit the waste pipe connector and gasket to the waste pipe outlet on the toilet.

3b. 将进水管接头和垫圈安装于座便器上的进水管入口。将排污管接头和垫圈安装于座便器上的排污管出口。

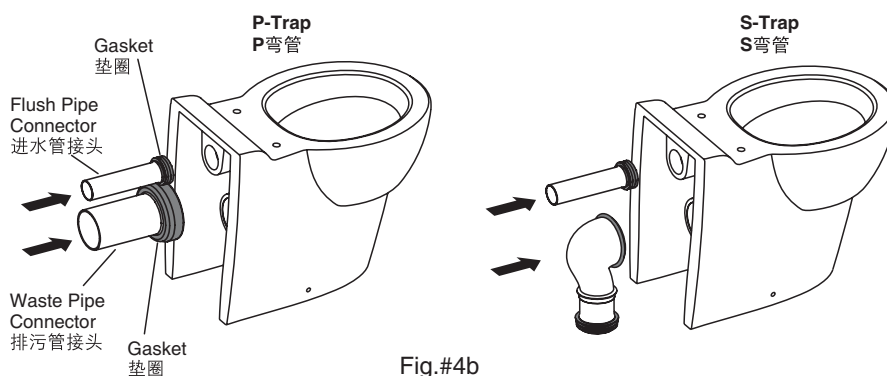


Fig.#4b
图4b

4. Install the inlet pipe to the lavatory as shown, and mark on the pipes at the back side of the bowl with a ruler and a pencil, and reserve appropriate space according to the distance from the back of the bowl to the inlet hole on the wall.

4. 按图将排污管、进水管装在座便器上，用直尺放在座便器后面的排污管、进水管用铅笔作标记。再根据座便器后面到墙壁排污头的实际情况作预留距离。

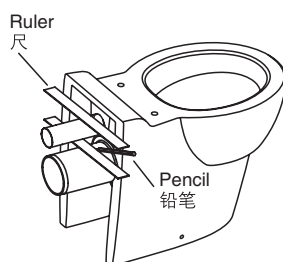


Fig.#5
图5

5. Eliminate unwanted part of the inlet pipe according to the marks of reserved space ,and rasp a smooth surface with files.

5. 如图在排污管、进水管已作标记的后端预留的位置上将多余部分锯掉。然后再用锉刀将锯掉的面锉平整并倒角。

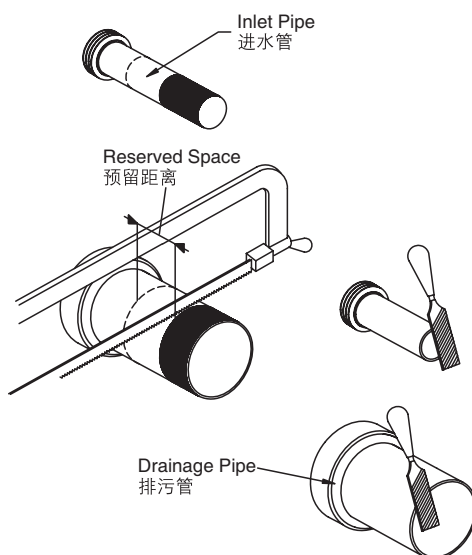


Fig.#6
图6

6. Apply mild soap and water around the gasket. Position the bowl over the floor fixings and connect the waste pipe.

6. 在垫圈四周涂上温和的皂液和清水。将座便器置于地面，连接排水管。

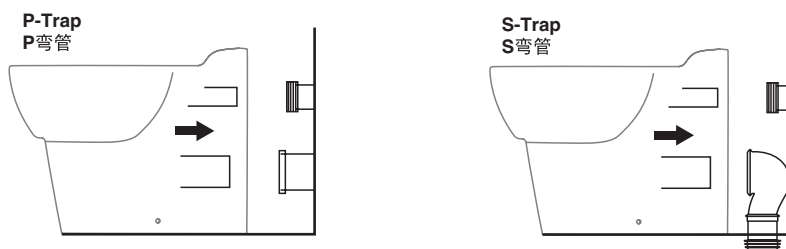


Fig.#7
图7

7. Carefully thread the screws into the brackets, until toilet is secure. Alternately tighten left and right sides to prevent pulling the toilet off center.

7. 小心地将螺丝穿过地脚支架直至座便器稳固。交替拧紧左右螺丝，以防止座便器脱离中心。

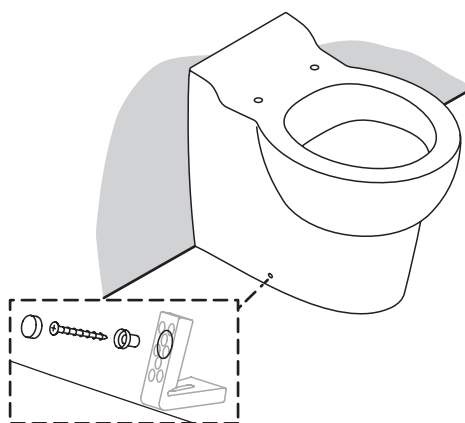


Fig.#8
图8

8. Apply silicone around base.

8. 在座便器底部四周涂上硅胶。

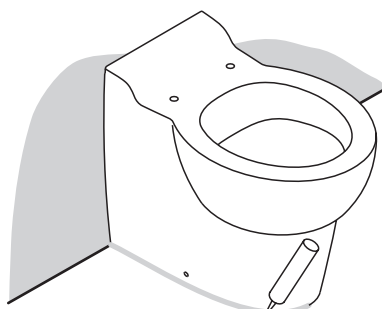


Fig.#9
图9

9. Install the seat.

9. 安装盖板。

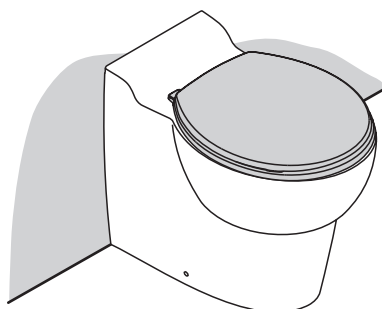


Fig.#10
图10

IMPORTANT CONSUMER INFORMATION 用户须知

CONSUMER RESPONSIBILITIES

If you live in a hard water area, make certain that the holes in the toilet rim are kept clean to ensure proper bowl flushing. Toilet bowl cleaners should be used at least once a week. Use a long-handled brush to clean the rim holes, and to clean as far into the trap as possible to prevent mineral deposits from forming.

Most toilet bowl cleaners are not harmful to the vitreous china surface of the toilet bowl. Please follow the bowl cleaner manufacturers instructions carefully.

Do not use abrasive cleaners or solvents.



WARNING: Risk of property or product damage.

Do not use in-tank cleaners. Products containing chlorine (calcium hypochlorite) can seriously damage fittings in the tank. This damage can cause leakage and property damage.

Kohler Company shall not be responsible or liable for any damage to these tank fittings caused by the use of cleaners containing chlorine (calcium hypochlorite).



CAUTION: Don't use any cement while installing the toilet. Heat expansion of the toilet may damage the feet of the toilet. Kohler will not be responsible for any damage because of using cement.



WARNING: Risk of product damage.

Do not throw into the toilet what is easy to block it, such as newspaper, paper pilch, sanitary towel. Do not bump the vitreous china with great force to prevent it from damaging and leaking. Do not use the product in the water below 0°C.



CAUTION: Please do not use hard materials (like scouring pad) to clean product surface, especially the product logo.

用户责任

如果你居住地方的水质是硬性，你必须保持冲水孔清洁，以确保座便器冲水正常。每星期应最少使用座便器清洁剂清洁一次，用长把手的刷子清洁冲水孔，并尽量伸入排污管洗刷，防止矿物质积聚。

大多数的座便器清洁剂对座便器釉面陶瓷是没有害的，请认真遵循座便器清洁剂制造商的指示来操作。

请勿使用腐蚀性清洁剂或溶剂。



警告：提防楼宇受损或损坏产品。请勿使用水箱内用清洁剂。含氯（次氯酸钙）的清洁剂会严重破坏水箱配件，从而引起渗漏，或对楼宇结构造成损坏。

科勒公司对此类因使用氯（次氯酸钙）而引致的水箱配件损毁，概不负责。



警告：在安装本座便器时切勿使用任何水泥。因为水泥的热膨胀可能使座便器的脚部挤破或损坏。科勒对所有因为水泥安装而引起的座便器破裂恕不负责。



警告：提防损坏产品。请不要向便器内冲入新闻纸、纸尿垫、妇用卫生巾等容易堵塞的物品。请不要用重力撞击陶瓷，以防止破损漏水。

不要在0°C以下的水环境中使用。



警告：请勿使用钢丝球等硬质材料擦洗产品表面，特别是产品商标处。